







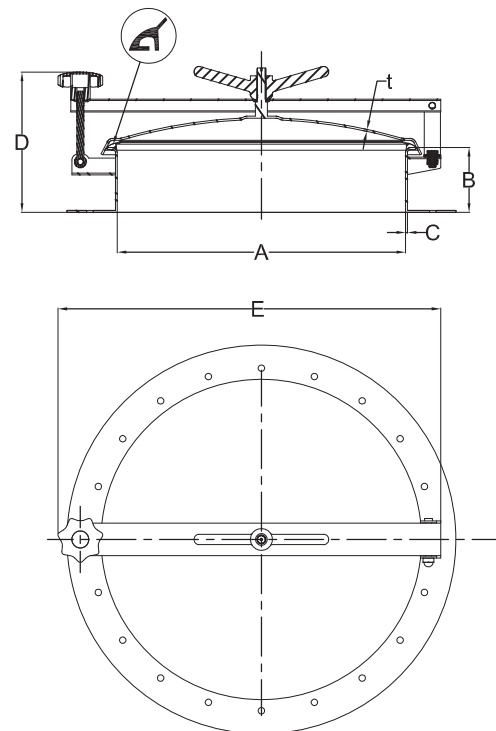
-  圆形常压人孔
-  Round manhole cover with back-side opening
-  Trappe Ronde avec ouverture par renversement
-  Runder Domdeckel, nach außen öffnend
-  Tapa circular con apertura vertical
-  Chiusino Circolare apertura a ribaltamento



- ◆ 7043 219
- ◆ 7043 300
- ◆ 7043 350
- ◆ 7043 400
- ◆ 7043 430
- ◆ 7043 450
- ◆ 7043 500
- ◆ 7043 600

规格尺寸 At temperature 50°C /122 °F

CODE	A	OD×C	B	T	P.MAX
	mm	mm	mm	mm	bar
7043 219	214	219×3.0	100	2.0	0.2
7043 300	294	300×3.0	100	2.5	0.18
7043 350	344	350×3.0	100	2.5	0.15
7043 400	394	400×3.0	100	2.5	0.12
7043 430	424	430×3.0	100	2.5	0.1
7043 450	444	450×3.0	100	2.5	0.1
7043 500	494	500×3.0	100	2.5	0
7043 600	594	600×3.0	100	2.5	0



如果您需要了解此产品细节，请联系我们业务部。

*1BAR ≈14.5PSI=0.1MPA