


 **Screwed Union Sight glasses**

 **Hublots**

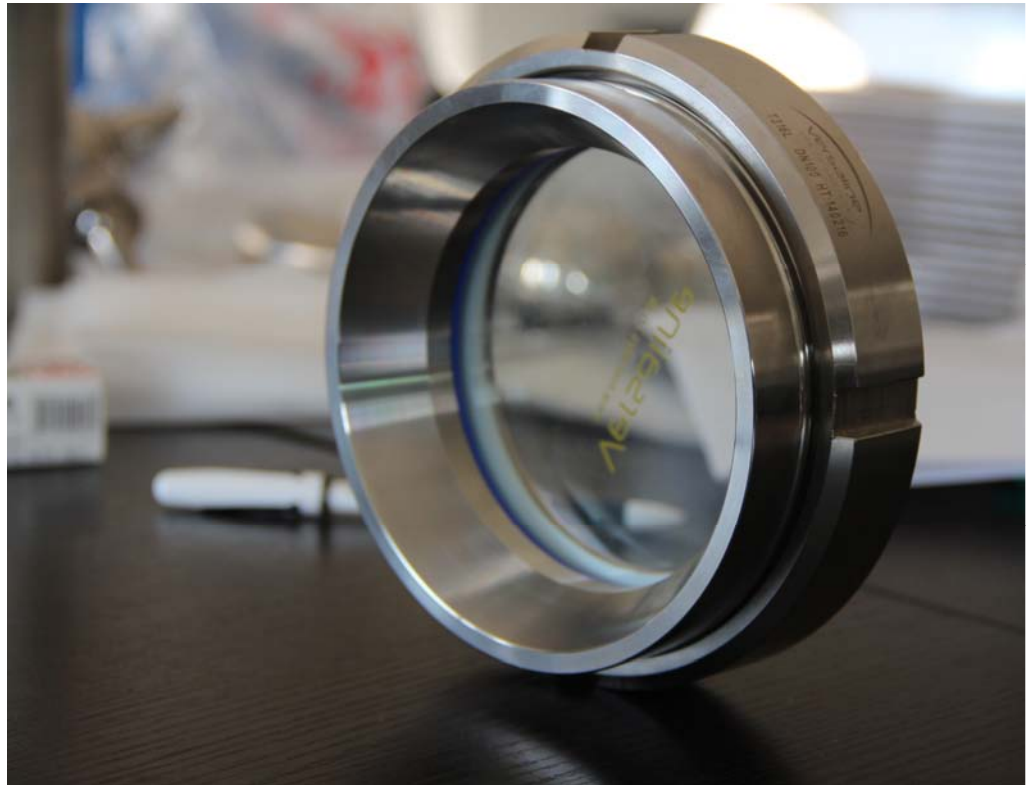
 **Schaugläser**

 **Mirillas**

 **Sight occhiali**



- ◆ 7009 04 050
- ◆ 7009 04 065
- ◆ 7009 04 080
- ◆ 7009 04 100



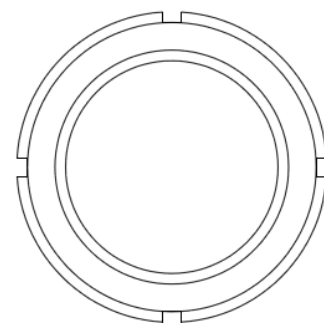
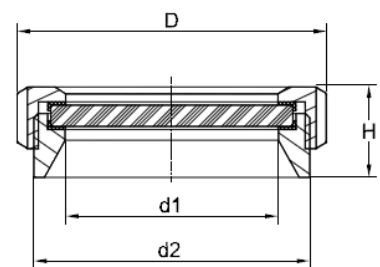
STANDARD SIZE /* At temperature 50°C / 122°F

| CODE | d1 | d2 | SG | D | H | P.R |
|-------------|-----|-------|---------|-----|----|-----|
| | mm | mm | mm | Mm | mm | Bar |
| 7009 04 050 | 50 | 80×3 | 64.5×10 | 92 | 35 | 10 |
| 7009 04 065 | 65 | 95×3 | 85×10 | 108 | 39 | 10 |
| 7009 04 080 | 85 | 114×3 | 100×10 | 125 | 42 | 10 |
| 7009 04 100 | 100 | 130×5 | 115×10 | 146 | 45 | 10 |

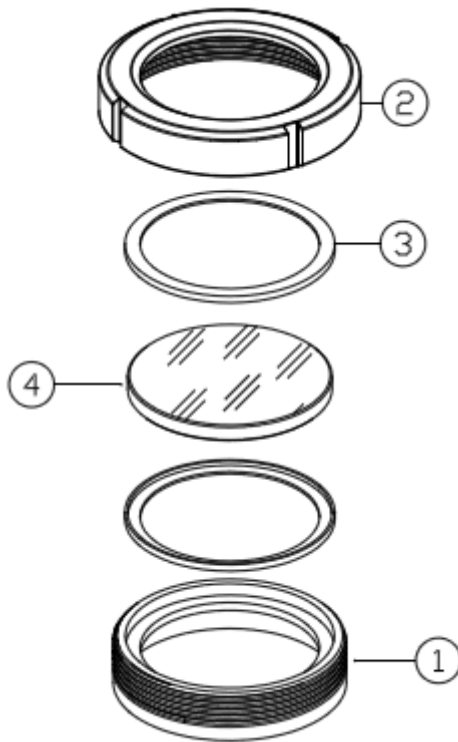
IF YOU WANT TO CHECK THE MORE DETAILS

PLEASE CHECK THE FOLLOWING DRAWING

*1BAR ≈ 14.5PSI = 0.1MPA



USESG Parts drawing



| Item | Description | Material | Qty |
|------|------------------|---------------|-----|
| 1 | Welding male | 1.4301/1.4404 | 1 |
| 2 | Nut | 1.4301 | 1 |
| 3 | Gasket | Silicon | 2 |
| 4 | Sight glass disc | Tempered | 1 |

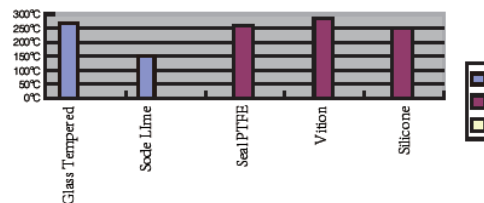
Applications

Its compact design also makes this unit ideal for inspection use in small bio-reactor vessels and the lids of manways or inspection hatches.

Used widely in the food, dairy, beverage, cosmetic and pharmaceutical industries, these units can be enhanced by the addition of optional wiper assemblies and also low voltage 24v/IP 65 sight & light assemblies.

Operating conditions:

These fittings are available for pressure up to 6 bar (depending on size, higher pressure rating on request). For temperature rating (depending on material selection) see the following diagram.



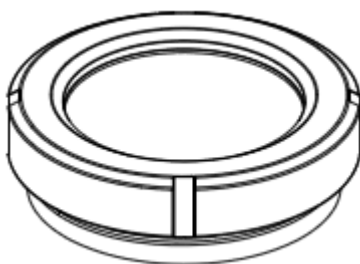
USESG Technology

TECHNICAL DATA

Working pressure: Acc. to table standard size.

Certificates

EN10204. 3.1 certificate



Ordering Information:

Tempered and borosilicate glass view ports to DIN 8902

Range of food grade seal materials including EPDM, Silicone, Viton® and PTFE

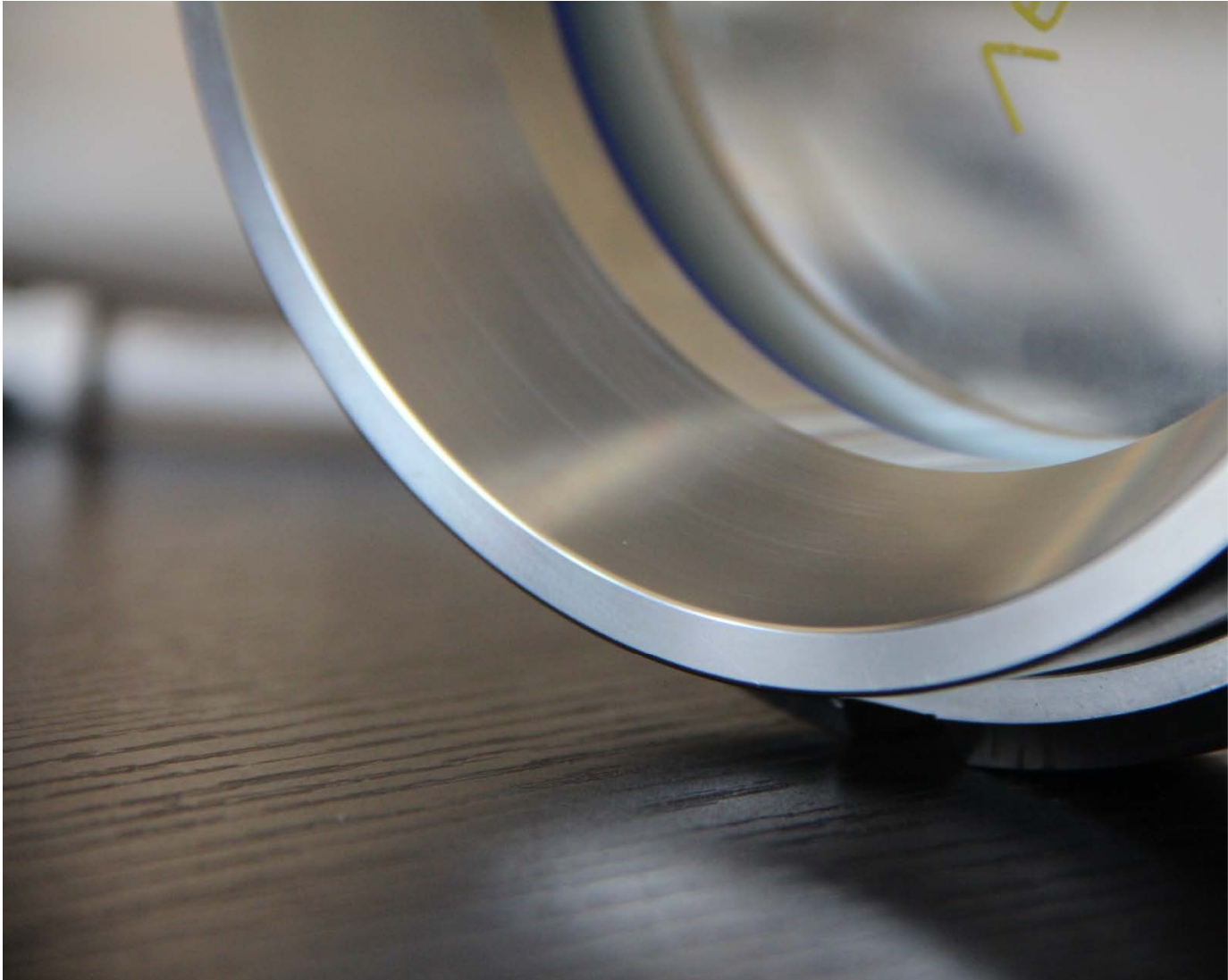
Wetted parts available in 316L 1.4404, 304SS 1.4401

IP65 rated low voltage 24v / 12V lights with 20 to 50 Watt halogen lamps

Note: Low voltage assemblies are only suitable for use in non explosive hazardous areas.

USESG Type Design

The best hygienic construction

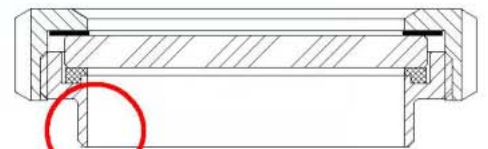


Sight Glass connection

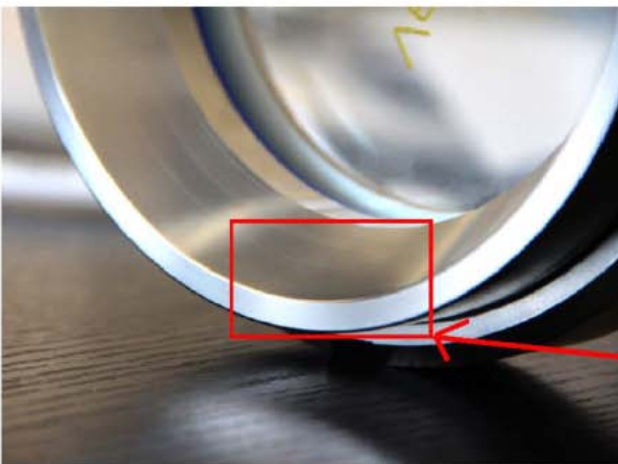
Standard Welding Parts



critical
hygienic
point



USESG Welding Parts



best
hygienic
construction

