

I line fittings

Weld to the ASTM A270 tubing



Removal from the system is not required
EACH FITTINGS PACKAGING HAS A BARCODE

Catalog

Table of Contents page 61 – 76



I line Fittings

Product Description&Specification...61

Elbows

| | | |
|----------|-------------|----|
| 2CI..... | 5330 | 70 |
| 2EI..... | 5331 | 70 |
| 2FI..... | 5332 | 71 |
| 2HI..... | 5333 | 71 |
| 2KI..... | 5334 | 71 |
| 2PI..... | 5335 | 72 |

Tees

| | | |
|-----------|-------------|----|
| 7AI..... | 5336 | 72 |
| 7EI..... | 5337 | 72 |
| 7HI..... | 5338 | 73 |
| 7I..... | 5339 | 73 |
| 28AI..... | 5347 | 76 |
| 28BI..... | 5348 | 76 |

Crosses

| | | |
|----------|-------------|----|
| 9HI..... | 5340 | 73 |
| 9I..... | 5341 | 74 |

Solid End Caps

| | | |
|---------------|-------------|----|
| 16AI-14I..... | 5315 | 65 |
| 16AI-15I..... | 5316 | 65 |
| 23BI..... | 5346 | 75 |

Clamps

| | | |
|-----------|-------------|----|
| 13I..... | 5344 | 75 |
| 13IS..... | 5345 | 75 |

Reducers

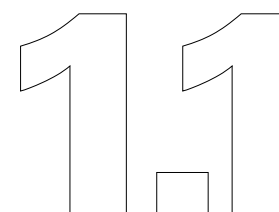
| | | |
|---------------|-------------|----|
| 31I-15FI..... | 5342 | 74 |
| 31I-14FI..... | 5343 | 74 |

Adapters

| | | |
|------------------|-------------|----|
| 17-14I-14MP..... | 5317 | 65 |
| 17-15I-14MP..... | 5318 | 66 |
| 14HTI..... | 5319 | 66 |
| 15HTI..... | 5320 | 66 |
| 17-14I-15I..... | 5321 | 67 |
| 17-15I-15I..... | 5322 | 67 |
| 17-14I-14I..... | 5323 | 68 |
| 14HRI..... | 5324 | 68 |
| 15HRI..... | 5325 | 68 |
| 21FI-14I..... | 5326 | 69 |
| 21FI-15I..... | 5327 | 69 |
| 22FI-14I..... | 5328 | 69 |
| 22FI-15I..... | 5329 | 70 |

Ferrules

| | | |
|------------|-------------|----|
| 14WI..... | 5309 | 63 |
| 15WI..... | 5310 | 63 |
| 14WLI..... | 5311 | 63 |
| 15WLI..... | 5312 | 64 |
| 14WHI..... | 5313 | 64 |
| 15WHI..... | 5314 | 64 |



I line fittings

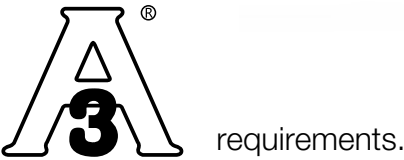
1.1

These are the original I-Line fittings and are made up of interlocking flat face ferrules, a flat gasket and a clamp. This interlocking, metal-to-metal design eliminates over compression by the clamp not allowing the gasket to be extruded into the product zone.

I-Line fittings can withstand higher vibrations, temperatures and pressures than other available connections available.



GEMO I line Fittings meet



I-LINE FITTINGS

SPECIFICATIONS....

Size Range: 1"OD through 8" OD.

Materials: T304, T316L.

Surface Finish: Mechanically Polished. Internal 20Ra (0.51µm), External 32Ra (0.8µm).

Gaskets are available in EPDM, Silicone, FPM, and PTFE.

NOTES THE DIMENSION TABLES

- All Dimensions are in inch and mm.
- Wall Thickness: Fittings 1.0"-3.0" sizes are manufactured with 16 gauge (0.065") wall thickness. The 4.0" tube size is manufactured with 14 gauge (0.083") wall thickness.



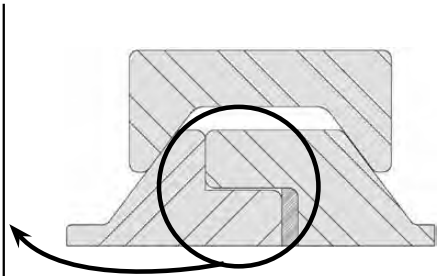
COMPRESSED

Gasket is compressed and fixed amount without hold up cavities.



DECOMPRESSED

Metal-to-Metal stop controls gasket extrusion to the bore line. Eliminates liquid hold up and hard to clean pockets, while reducing pressure drop.



Greater metal cross section for a robust ferrule, resists damage due to handling. Ideal for heavy duty applicators and vibration resistance.

I line fittings

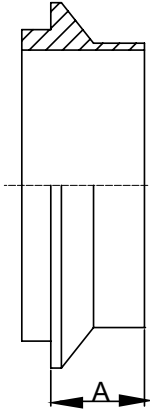
Part for ASTM A270 tubes

Finish: OD: Semi bright. ID: Mirror
Connections: Welding ends



1.1

14WI
Male I-Line Short Weld Ferrule

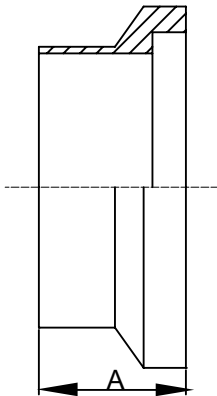


Basic Ordering Number: 5309

| NO. | Size | A | |
|-----------|------|-------|------|
| | | inch | mm |
| 5309 0100 | 1" | 0.6 | 15.2 |
| 5309 0150 | 1.5" | 0.746 | 18.9 |
| 5309 0200 | 2" | 0.78 | 19.8 |
| 5309 0250 | 2.5" | 0.85 | 21.6 |
| 5309 0300 | 3" | 0.906 | 23.0 |
| 5309 0400 | 4" | 1.031 | 26.2 |
| 5309 0600 | 6" | 0.94 | 23.9 |
| 5309 0800 | 8" | 0.94 | 23.9 |

**T304 and T316L are available.

15WI
Female I-Line Short Weld Ferrule

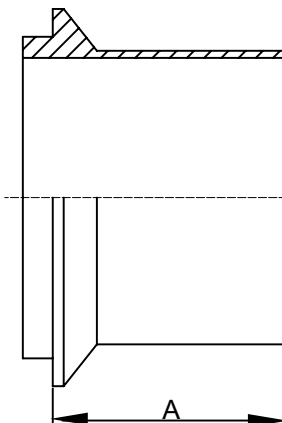


Basic Ordering Number: 5310

| NO. | Size | A | |
|-----------|------|-------|------|
| | | inch | mm |
| 5310 0100 | 1" | 0.786 | 20.0 |
| 5310 0150 | 1.5" | 0.95 | 24.1 |
| 5310 0200 | 2" | 1.036 | 26.3 |
| 5310 0250 | 2.5" | 1.161 | 29.5 |
| 5310 0300 | 3" | 1.223 | 31.1 |
| 5310 0400 | 4" | 1.348 | 34.2 |
| 5310 0600 | 6" | 1.13 | 28.7 |
| 5310 0800 | 8" | 1.13 | 28.7 |

**T304 and T316L are available.

14WLI
Male I-Line Long Weld Ferrule



Basic Ordering Number: 5311

| NO. | Size | A | |
|-----------|------|-------|------|
| | | inch | mm |
| 5311 0100 | 1" | 1.562 | 39.7 |
| 5311 0150 | 1.5" | 1.843 | 46.8 |
| 5311 0200 | 2" | 2.062 | 52.4 |
| 5311 0250 | 2.5" | 2.188 | 55.6 |
| 5311 0300 | 3" | 2.375 | 60.3 |
| 5311 0400 | 4" | 2.688 | 68.3 |
| 5311 0600 | 6" | 2.688 | 68.3 |

**T304 and T316L are available.

**All measurements are in millimeters (mm)
Conversion to inches, 25.4mm=1inch

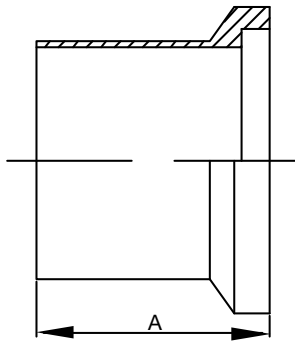
I line fittings

Part for ASTM A270 tubes



Finish: OD: Semi bright. ID: Mirror
Connections: Welding ends

15WLI Female I-Line Long Weld Ferrule

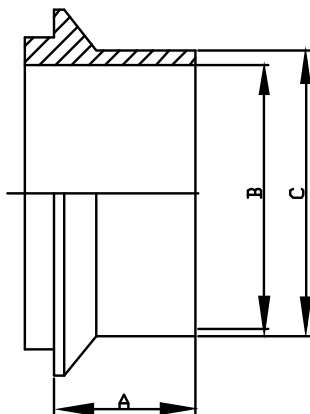


Basic Ordering Number: 5312

| NO. | Size | A | |
|-----------|------|-------|------|
| | | inch | mm |
| 5312 0100 | 1" | 1.75 | 44.4 |
| 5312 0150 | 1.5" | 2.031 | 51.6 |
| 5312 0200 | 2" | 2.312 | 58.7 |
| 5312 0250 | 2.5" | 2.5 | 63.5 |
| 5312 0300 | 3" | 2.688 | 68.3 |
| 5312 0400 | 4" | 3 | 76.2 |
| 5312 0600 | 6" | 3 | 76.2 |

**T304 and T316L are available.

14WHI Male I-Line Heavy Wall Tank Weld Ferrule

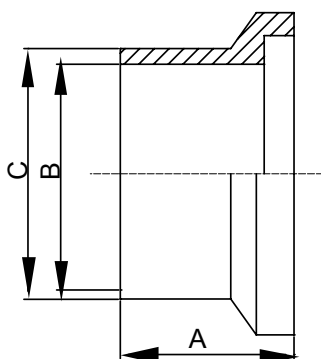


Basic Ordering Number: 5313

| NO. | Size | A | | B | | C | |
|-----------|------|-------|------|-------|------|-------|-------|
| | | inch | mm | inch | mm | inch | mm |
| 5313 0100 | 1" | 1.312 | 33.3 | 0.87 | 22.1 | 1.25 | 31.7 |
| 5313 0150 | 1.5" | 1.457 | 37.0 | 1.37 | 34.8 | 1.688 | 42.9 |
| 5313 0200 | 2" | 1.5 | 38.1 | 1.87 | 47.5 | 2.25 | 57.1 |
| 5313 0250 | 2.5" | 1.437 | 36.5 | 2.37 | 60.2 | 2.75 | 69.8 |
| 5313 0300 | 3" | 1.5 | 38.1 | 2.87 | 72.9 | 3.313 | 84.1 |
| 5313 0400 | 4" | 1.812 | 46.0 | 3.834 | 97.4 | 4.25 | 107.9 |

**T304 and T316L are available.

15WHI Female I-Line Heavy Wall Tank Weld Ferrule



Basic Ordering Number: 5314

| NO. | Size | A | | B | | C | |
|-----------|------|-------|------|-------|------|-------|-------|
| | | inch | mm | inch | mm | inch | mm |
| 5314 0100 | 1" | 1.5 | 38.1 | 0.87 | 22.1 | 1.25 | 31.7 |
| 5314 0150 | 1.5" | 1.625 | 41.3 | 1.37 | 34.8 | 1.688 | 42.9 |
| 5314 0200 | 2" | 1.75 | 44.4 | 1.87 | 47.5 | 2.25 | 57.1 |
| 5314 0250 | 2.5" | 1.75 | 44.4 | 2.37 | 60.2 | 2.75 | 69.8 |
| 5314 0300 | 3" | 1.812 | 46.0 | 2.87 | 72.9 | 3.313 | 84.1 |
| 5314 0400 | 4" | 2.125 | 54.0 | 3.834 | 97.4 | 4.25 | 107.9 |

**T304 and T316L are available.

NOTE! Treatment: Annealed.

**All measurements are in millimeters (mm)
Conversion to inches, 25.4mm=1inch

I line fittings

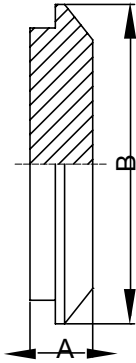
Part for ASTM A270 tubes

Finish: OD: Semi bright. ID: Mirror
Connections: Welding ends



1.1

16AI-14I
Male I-Line Solid End Cap

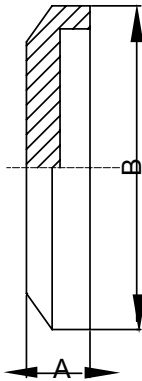


Basic Ordering Number: 5315

| NO. | Size | A | | B | |
|-----------|------|-------|-------|-------|-------|
| | | inch | mm | inch | mm |
| 5315 0100 | 1" | 0.5 | 12.7 | 1.985 | 50.4 |
| 5315 0150 | 1.5" | 0.5 | 12.7 | 1.985 | 50.4 |
| 5315 0200 | 2" | 0.562 | 14.3 | 2.64 | 67.0 |
| 5315 0250 | 2.5" | 0.75 | 19.05 | 3.307 | 84.0 |
| 5315 0300 | 3" | 0.75 | 19.05 | 3.87 | 98.3 |
| 5315 0400 | 4" | 0.75 | 19.05 | 4.87 | 123.7 |
| 5315 0600 | 6" | 0.75 | 19.05 | 7.495 | 190.4 |

**T304 and T316L are available.

16AI-15I
Female I-Line Solid End Cap

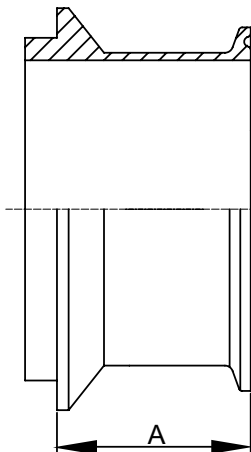


Basic Ordering Number: 5316

| NO. | Size | A | | B | |
|-----------|------|-------|-------|-------|-------|
| | | inch | mm | inch | mm |
| 5316 0100 | 1" | 0.5 | 12.7 | 1.985 | 50.4 |
| 5316 0150 | 1.5" | 0.5 | 12.7 | 1.985 | 50.4 |
| 5316 0200 | 2" | 0.562 | 14.3 | 2.64 | 67.0 |
| 5316 0250 | 2.5" | 0.75 | 19.05 | 3.307 | 84.0 |
| 5316 0300 | 3" | 0.75 | 19.05 | 3.87 | 98.3 |
| 5316 0400 | 4" | 0.75 | 19.05 | 4.87 | 123.7 |
| 5316 0600 | 6" | 0.75 | 19.05 | 7.495 | 190.4 |

**T304 and T316L are available.

17-14I-14MP
Male I-Line X Clamp Adapter



Basic Ordering Number: 5317

| NO. | Size | A | |
|-----------|------|-------|------|
| | | inch | mm |
| 5317 0100 | 1" | 1.093 | 27.8 |
| 5317 0150 | 1.5" | 1.265 | 32.1 |
| 5317 0200 | 2" | 1.29 | 32.8 |
| 5317 0250 | 2.5" | 1.312 | 33.3 |
| 5317 0300 | 3" | 1.406 | 35.7 |
| 5317 0400 | 4" | 1.656 | 42.1 |

**T304 and T316L are available.

**All measurements are in millimeters (mm)
Conversion to inches, 25.4mm=1inch

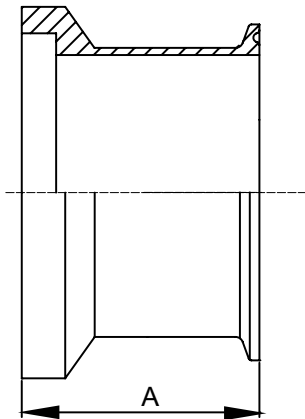
I line fittings

Part for ASTM A270 tubes



Finish: OD: Semi bright. ID: Mirror
Connections: Welding ends

17-15I-14MP
Female I-Line X Clamp Adapter

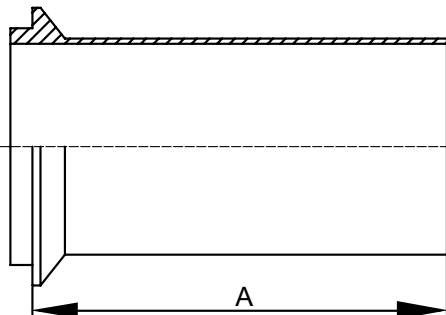


Basic Ordering Number: 5318

| NO. | Size | A | |
|-----------|------|-------|------|
| | | inch | mm |
| 5318 0100 | 1" | 1.28 | 32.5 |
| 5318 0150 | 1.5" | 1.45 | 36.8 |
| 5318 0200 | 2" | 1.54 | 39.1 |
| 5318 0250 | 2.5" | 1.625 | 41.3 |
| 5318 0300 | 3" | 1.718 | 43.6 |
| 5318 0400 | 4" | 1.968 | 50.0 |

**T304 and T316L are available.

14HTI
I-LINE Male To Tygon Tube Adapter

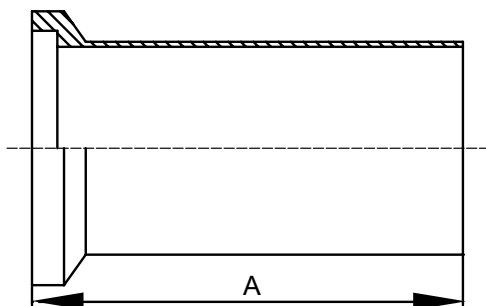


Basic Ordering Number: 5319

| NO. | Size | A | |
|-----------|------|------|-------|
| | | inch | mm |
| 5319 0100 | 1" | 4.06 | 103.1 |
| 5319 0150 | 1.5" | 4.28 | 108.7 |
| 5319 0200 | 2" | 4.5 | 114.3 |
| 5319 0250 | 2.5" | 4.81 | 122.2 |
| 5319 0300 | 3" | 5.06 | 128.5 |
| 5319 0400 | 4" | 5.19 | 131.8 |

**T304 and T316L are available.

15HTI
I-LINE Female To Tygon Tube Adapter



Basic Ordering Number: 5320

| NO. | Size | A | |
|-----------|------|------|-------|
| | | inch | mm |
| 5320 0100 | 1" | 4.25 | 107.9 |
| 5320 0150 | 1.5" | 4.47 | 113.5 |
| 5320 0200 | 2" | 4.75 | 120.6 |
| 5320 0250 | 2.5" | 5.13 | 130.3 |
| 5320 0300 | 3" | 5.38 | 136.6 |
| 5320 0400 | 4" | 5.5 | 139.7 |

**T304 and T316L are available.

NOTE! Treatment: Annealed.

**All measurements are in millimeters (mm)
Conversion to inches, 25.4mm=1inch

I line fittings

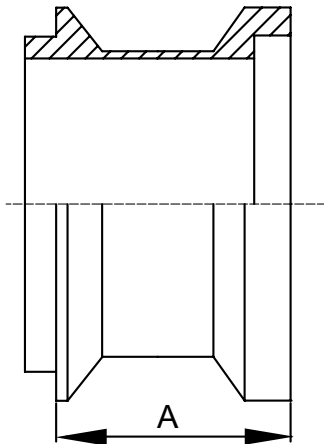
Part for ASTM A270 tubes



Finish: OD: Semi bright. ID: Mirror
Connections: Welding ends

1.1

17-14I-15I I-LINE Male X Female Adapter

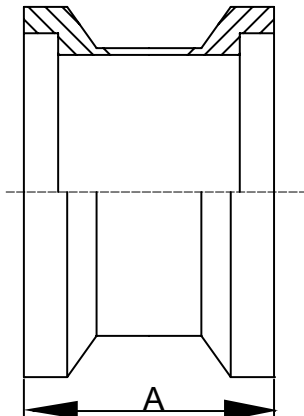


Basic Ordering Number: 5321

| NO. | Size | A | |
|-----------|------|------|------|
| | | inch | mm |
| 5321 0100 | 1" | 1.34 | 34.0 |
| 5321 0150 | 1.5" | 1.66 | 42.2 |
| 5321 0200 | 2" | 1.81 | 46.0 |
| 5321 0250 | 2.5" | 1.97 | 50.0 |
| 5321 0300 | 3" | 2.09 | 53.1 |
| 5321 0400 | 4" | 2.34 | 59.4 |

**T304 and T316L are available.

17-15I-15I I-LINE Female X Female Adapter



Basic Ordering Number: 5322

| NO. | Size | A | |
|-----------|------|------|------|
| | | inch | mm |
| 5322 0100 | 1" | 1.56 | 39.6 |
| 5322 0150 | 1.5" | 1.88 | 47.7 |
| 5322 0200 | 2" | 2.06 | 52.3 |
| 5322 0250 | 2.5" | 2.31 | 58.7 |
| 5322 0300 | 3" | 2.44 | 62.0 |
| 5322 0400 | 4" | 2.69 | 68.3 |

**T304 and T316L are available.

**All measurements are in millimeters (mm)
Conversion to inches, 25.4mm=1inch

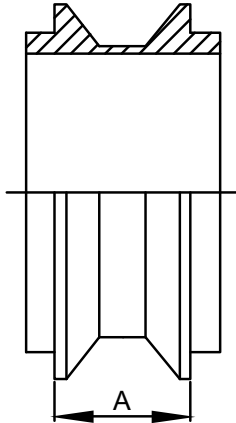
I line fittings

Part for ASTM A270 tubes



Finish: OD: Semi bright. ID: Mirror
Connections: Welding ends

17-14I-14I
I-LINE Male X Male Adapter

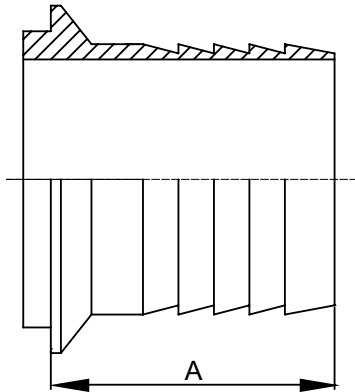


Basic Ordering Number: 5323

| NO. | Size | A | |
|-----------|------|------|------|
| | | inch | mm |
| 5323 0100 | 1" | 1.19 | 30.2 |
| 5323 0150 | 1.5" | 1.5 | 38.1 |
| 5323 0200 | 2" | 1.56 | 39.6 |
| 5323 0250 | 2.5" | 1.69 | 42.9 |
| 5323 0300 | 3" | 1.81 | 46.0 |
| 5323 0400 | 4" | 2.06 | 52.3 |

**T304 and T316L are available.

14HRI
I-Line Male To Rubber Hose Adapter

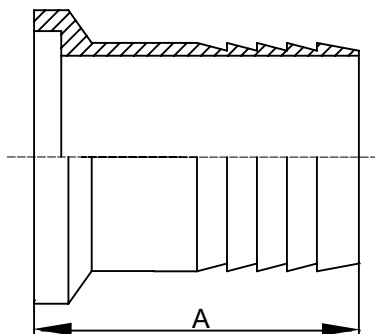


Basic Ordering Number: 5324

| NO. | Size | A | |
|-----------|------|------|------|
| | | inch | mm |
| 5324 0100 | 1" | 1.69 | 42.9 |
| 5324 0150 | 1.5" | 1.63 | 41.4 |
| 5324 0200 | 2" | 2.28 | 57.9 |
| 5324 0250 | 2.5" | 2.38 | 60.4 |
| 5324 0300 | 3" | 3.19 | 81.0 |
| 5324 0400 | 4" | 3.47 | 88.1 |

**T304 and T316L are available.

15HRI
I-LINE Female To Rubber Hose Adapter



Basic Ordering Number: 5325

| NO. | Size | A | |
|-----------|------|------|------|
| | | inch | mm |
| 5325 0100 | 1" | 1.88 | 47.7 |
| 5325 0150 | 1.5" | 1.81 | 46.0 |
| 5325 0200 | 2" | 2.56 | 65.0 |
| 5325 0250 | 2.5" | 2.69 | 68.3 |
| 5325 0300 | 3" | 3.5 | 88.9 |
| 5325 0400 | 4" | 3.78 | 96.0 |

**T304 and T316L are available.

NOTE! Treatment: Annealed.

**All measurements are in millimeters (mm)
Conversion to inches, 25.4mm=1inch

I line fittings

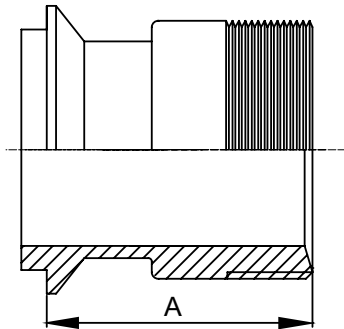
Part for ASTM A270 tubes



Finish: OD: Semi bright. ID: Mirror
Connections: Welding ends

1.1

21FI -14I
I-LINE Male X Male NPT Adapter

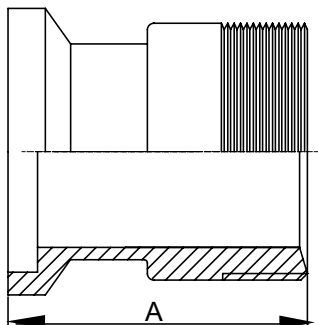


Basic Ordering Number: 5326

| NO. | Size | A | |
|-----------|------|------|------|
| | | inch | mm |
| 5326 0100 | 1" | 2.25 | 57.1 |
| 5326 0150 | 1.5" | 2.19 | 55.6 |
| 5326 0200 | 2" | 2.56 | 65.0 |
| 5326 0250 | 2.5" | 2.91 | 73.9 |
| 5326 0300 | 3" | 3.09 | 78.5 |
| 5326 0400 | 4" | 3.25 | 82.5 |

**T304 and T316L are available.

21FI -15I
I-LINE Female X Male NPT Adapter

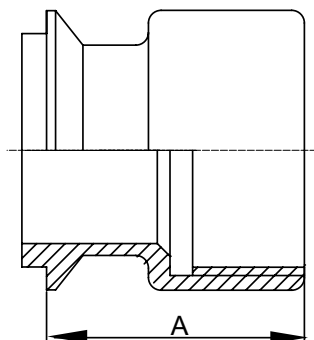


Basic Ordering Number: 5327

| NO. | Size | A | |
|-----------|------|------|------|
| | | inch | mm |
| 5327 0100 | 1" | 2.44 | 62.0 |
| 5327 0150 | 1.5" | 2.38 | 60.4 |
| 5327 0200 | 2" | 2.56 | 65.0 |
| 5327 0250 | 2.5" | 3.16 | 80.3 |
| 5327 0300 | 3" | 3.41 | 86.6 |
| 5327 0400 | 4" | 3.56 | 90.4 |

**T304 and T316L are available.

22FI -14I
I-LINE Male X Female NPT Adapter



Basic Ordering Number: 5328

| NO. | Size | A | |
|-----------|------|------|------|
| | | inch | mm |
| 5328 0100 | 1" | 1.88 | 47.7 |
| 5328 0150 | 1.5" | 1.84 | 46.7 |
| 5328 0200 | 2" | 1.91 | 48.5 |
| 5328 0250 | 2.5" | 2.28 | 57.9 |
| 5328 0300 | 3" | 2.47 | 62.7 |
| 5328 0400 | 4" | 2.63 | 66.8 |

**T304 and T316L are available.

**All measurements are in millimeters (mm)
Conversion to inches, 25.4mm=1inch

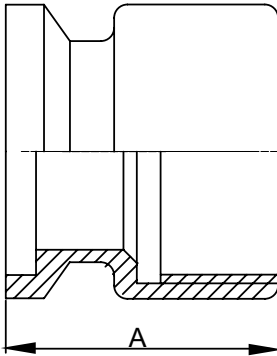
I line fittings

Part for ASTM A270 tubes



Finish: OD: Semi bright. ID: Mirror
Connections: Welding ends

22FI -15I
I-LINE Female X Female NPT Adapter

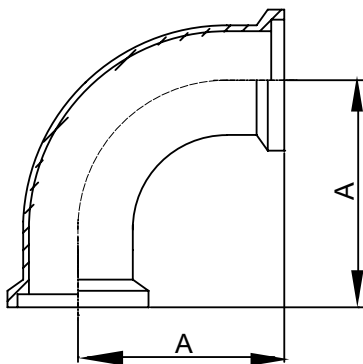


Basic Ordering Number: 5329

| NO. | Size | A | |
|-----------|------|------|------|
| | | inch | mm |
| 5329 0100 | 1" | 2.06 | 52.3 |
| 5329 0150 | 1.5" | 2.03 | 51.6 |
| 5329 0200 | 2" | 2.19 | 55.6 |
| 5329 0250 | 2.5" | 2.59 | 65.8 |
| 5329 0300 | 3" | 2.78 | 70.6 |
| 5329 0400 | 4" | 2.47 | 62.7 |

**T304 and T316L are available.

2CI
Female I-LINE 90 Degree Elbow

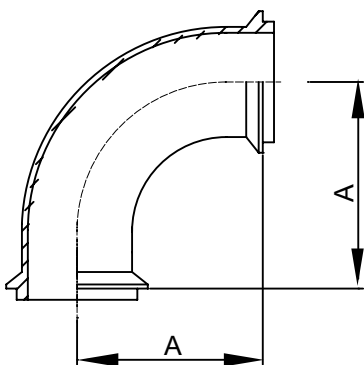


Basic Ordering Number: 5330

| NO. | Size | A | |
|-----------|------|-------|-------|
| | | inch | mm |
| 5330 0100 | 1" | 2.286 | 58.1 |
| 5330 0150 | 1.5" | 3.192 | 81.1 |
| 5330 0200 | 2" | 4.036 | 102.5 |
| 5330 0250 | 2.5" | 4.911 | 124.7 |
| 5330 0300 | 3" | 5.723 | 145.4 |
| 5330 0400 | 4" | 7.348 | 186.6 |

**T304 and T316L are available.

2EI
Male I-LINE 90 Degree Elbow



Basic Ordering Number: 5331

| NO. | Size | A | |
|-----------|------|-------|-------|
| | | inch | mm |
| 5331 0100 | 1" | 2.089 | 53.1 |
| 5331 0150 | 1.5" | 3 | 76.2 |
| 5331 0200 | 2" | 3.78 | 96.0 |
| 5331 0250 | 2.5" | 4.6 | 116.8 |
| 5331 0300 | 3" | 5.412 | 137.5 |
| 5331 0400 | 4" | 7.037 | 178.7 |

**T304 and T316L are available.

NOTE! Treatment: Annealed.

**All measurements are in millimeters (mm)
Conversion to inches, 25.4mm=1inch

I line fittings

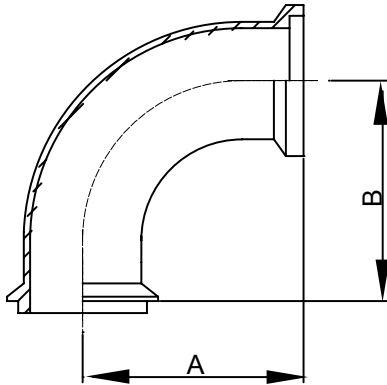
Part for ASTM A270 tubes



Finish: OD: Semi bright. ID: Mirror
Connections: Welding ends

1.1

2FI I-LINE Female X Male End 90 Degree Elbow

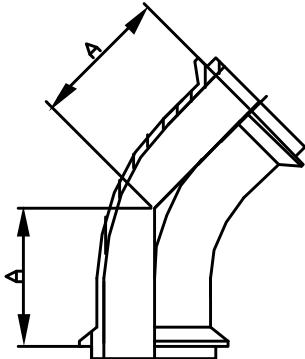


Basic Ordering Number: 5332

| NO. | Size | A | | B | |
|-----------|------|-------|-------|-------|-------|
| | | inch | mm | inch | mm |
| 5332 0100 | 1" | 2.281 | 57.9 | 2.093 | 53.2 |
| 5332 0150 | 1.5" | 3.188 | 81.0 | 3 | 76.2 |
| 5332 0200 | 2" | 4.031 | 102.4 | 3.78 | 96.0 |
| 5332 0250 | 2.5" | 4.906 | 124.6 | 4.6 | 116.8 |
| 5332 0300 | 3" | 5.718 | 145.2 | 5.41 | 137.4 |
| 5332 0400 | 4" | 7.344 | 186.5 | 7.031 | 178.6 |

**T304 and T316L are available.

2HI I-LINE Male Ends 45 Degree Elbow

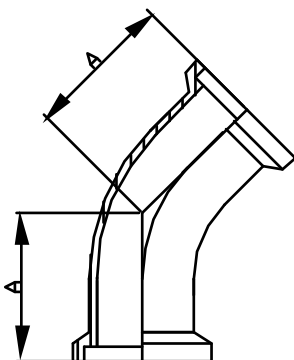


Basic Ordering Number: 5333

| NO. | Size | A | |
|-----------|------|-------|------|
| | | inch | mm |
| 5333 0100 | 1" | 1.214 | 30.8 |
| 5333 0150 | 1.5" | 1.526 | 38.8 |
| 5333 0200 | 2" | 2.03 | 51.6 |
| 5333 0250 | 2.5" | 2.412 | 61.3 |
| 5333 0300 | 3" | 2.787 | 70.8 |
| 5333 0400 | 4" | 3.537 | 89.8 |

**T304 and T316L are available.

2KI I-LINE Female Ends 45 Degree Elbow



Basic Ordering Number: 5334

| NO. | Size | A | |
|-----------|------|-------|------|
| | | inch | mm |
| 5334 0100 | 1" | 1.411 | 35.8 |
| 5334 0150 | 1.5" | 1.879 | 47.7 |
| 5334 0200 | 2" | 2.286 | 58.1 |
| 5334 0250 | 2.5" | 2.723 | 69.2 |
| 5334 0300 | 3" | 3.098 | 78.7 |
| 5334 0400 | 4" | 3.848 | 97.7 |

**T304 and T316L are available.

**All measurements are in millimeters (mm)
Conversion to inches, 25.4mm=1inch

I line fittings

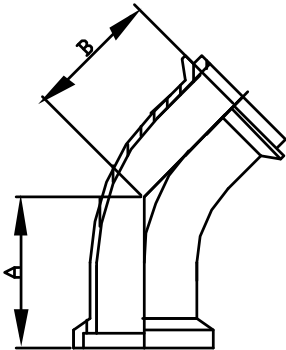
Part for ASTM A270 tubes



Finish: OD: Semi bright. ID: Mirror
Connections: Welding ends

2PI

I-LINE Female X Male End 45 Degree



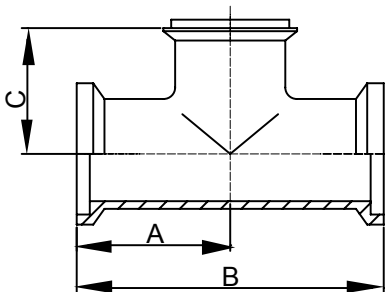
Basic Ordering Number: 5335

| NO. | Size | A | | B | | C | |
|-----------|------|-------|------|-------|------|------|-------|
| | | inch | mm | inch | mm | inch | mm |
| 5335 0100 | 1" | 1.411 | 35.8 | 1.214 | 30.8 | 1.5 | 38.1 |
| 5335 0150 | 1.5" | 1.879 | 47.7 | 1.526 | 38.8 | 2.25 | 57.1 |
| 5335 0200 | 2" | 2.286 | 58.1 | 2.03 | 51.6 | 3 | 76.2 |
| 5335 0250 | 2.5" | 2.723 | 69.2 | 2.412 | 61.3 | 3.75 | 95.2 |
| 5335 0300 | 3" | 3.098 | 78.7 | 2.787 | 70.8 | 4.5 | 114.3 |
| 5335 0400 | 4" | 3.848 | 97.7 | 3.537 | 89.8 | 6 | 152.4 |

**T304 and T316L are available.

7AI

I-LINE Female Run X Male Outlet Tee



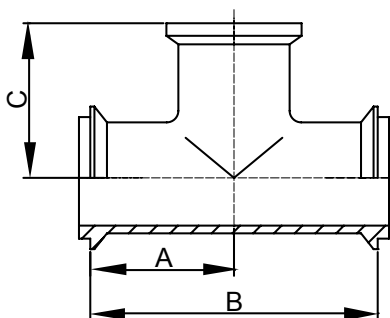
Basic Ordering Number: 5336

| NO. | Size | A | | B | | C | |
|-----------|------|-------|-------|-------|-------|-------|-------|
| | | inch | mm | inch | mm | inch | mm |
| 5336 0100 | 1" | 1.911 | 48.5 | 3.822 | 97.1 | 1.714 | 43.5 |
| 5336 0150 | 1.5" | 2.598 | 66.0 | 5.196 | 132.0 | 2.402 | 61.0 |
| 5336 0200 | 2" | 3.099 | 78.7 | 6.198 | 157.4 | 2.843 | 72.2 |
| 5336 0250 | 2.5" | 3.505 | 89.0 | 7.01 | 178.0 | 3.194 | 81.1 |
| 5336 0300 | 3" | 3.817 | 96.9 | 7.634 | 193.9 | 3.506 | 89.0 |
| 5336 0400 | 4" | 4.786 | 121.6 | 9.572 | 243.1 | 4.475 | 113.7 |

**T304 and T316L are available.

7EI

I-LINE Male Run X Female Outlet Tee



Basic Ordering Number: 5337

| NO. | Size | A | | B | | C | |
|-----------|------|-------|-------|-------|-------|-------|-------|
| | | inch | mm | inch | mm | inch | mm |
| 5337 0100 | 1" | 1.714 | 43.5 | 3.428 | 87.1 | 1.911 | 48.5 |
| 5337 0150 | 1.5" | 2.402 | 61.0 | 4.804 | 122.0 | 2.598 | 66.0 |
| 5337 0200 | 2" | 2.843 | 72.2 | 5.686 | 144.4 | 3.099 | 78.7 |
| 5337 0250 | 2.5" | 3.194 | 81.1 | 6.388 | 162.2 | 3.505 | 89.0 |
| 5337 0300 | 3" | 3.506 | 89.0 | 7.012 | 178.1 | 3.817 | 96.9 |
| 5337 0400 | 4" | 4.475 | 113.7 | 8.95 | 227.3 | 4.786 | 121.6 |

**T304 and T316L are available.

NOTE! Treatment: Annealed.

**All measurements are in millimeters (mm)
Conversion to inches, 25.4mm=1inch

I line fittings

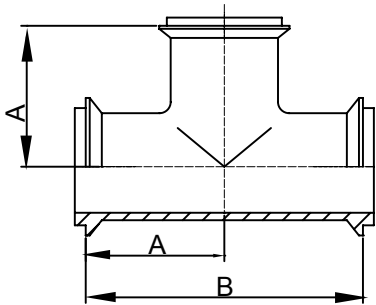
Part for ASTM A270 tubes



Finish: OD: Semi bright. ID: Mirror
Connections: Welding ends

1.1

7HI
I-LINE Male Ends Tee

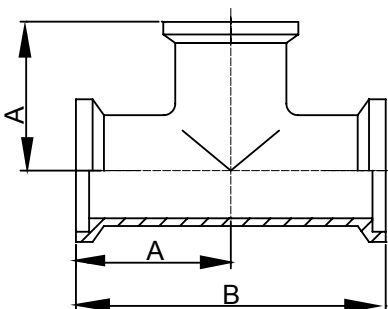


Basic Ordering Number: 5338

| NO. | Size | A | | B | |
|-----------|------|-------|-------|-------|-------|
| | | inch | mm | inch | mm |
| 5338 0100 | 1" | 1.714 | 43.5 | 3.428 | 87.1 |
| 5338 0150 | 1.5" | 2.402 | 61.0 | 4.804 | 122.0 |
| 5338 0200 | 2" | 2.843 | 72.2 | 5.686 | 144.4 |
| 5338 0250 | 2.5" | 3.194 | 81.1 | 6.388 | 162.2 |
| 5338 0300 | 3" | 3.506 | 89.0 | 7.012 | 178.1 |
| 5338 0400 | 4" | 4.475 | 113.7 | 8.95 | 227.3 |

**T304 and T316L are available.

7I
I-LINE Female Ends Tee

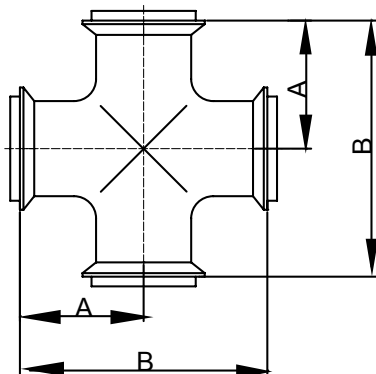


Basic Ordering Number: 5339

| NO. | Size | A | | B | |
|-----------|------|-------|-------|-------|-------|
| | | inch | mm | inch | mm |
| 5339 0100 | 1" | 1.911 | 48.5 | 3.822 | 97.1 |
| 5339 0150 | 1.5" | 2.598 | 66.0 | 5.196 | 132.0 |
| 5339 0200 | 2" | 3.099 | 78.7 | 6.198 | 157.4 |
| 5339 0250 | 2.5" | 3.505 | 89.0 | 7.01 | 178.0 |
| 5339 0300 | 3" | 3.817 | 96.9 | 7.634 | 193.9 |
| 5339 0400 | 4" | 4.786 | 121.6 | 9.572 | 243.1 |

**T304 and T316L are available.

9HI
I-LINE Male Ends Cross



Basic Ordering Number: 5340

| NO. | Size | A | | B | |
|-----------|------|-------|-------|-------|-------|
| | | inch | mm | inch | mm |
| 5340 0100 | 1" | 1.714 | 43.5 | 3.428 | 87.1 |
| 5340 0150 | 1.5" | 2.402 | 61.0 | 4.804 | 122.0 |
| 5340 0200 | 2" | 2.843 | 72.2 | 5.686 | 144.4 |
| 5340 0250 | 2.5" | 3.194 | 81.1 | 6.388 | 162.2 |
| 5340 0300 | 3" | 3.506 | 89.0 | 7.012 | 178.1 |
| 5340 0400 | 4" | 4.475 | 113.7 | 8.95 | 227.3 |

**T304 and T316L are available.

**All measurements are in millimeters (mm)
Conversion to inches, 25.4mm=1inch

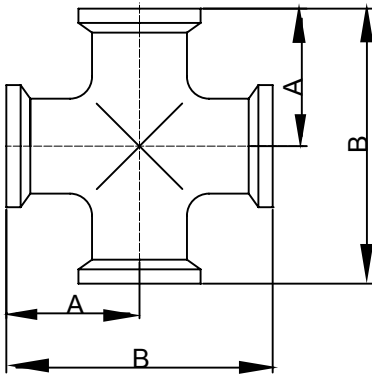
I line fittings

Part for ASTM A270 tubes



Finish: OD: Semi bright. ID: Mirror
Connections: Welding ends

9I I-LINE Female Ends Cross

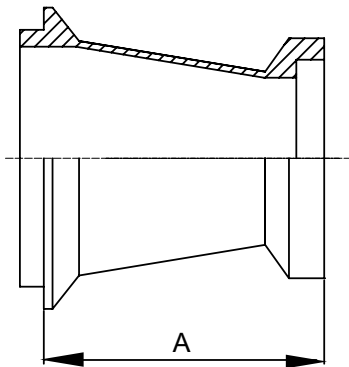


Basic Ordering Number: 5341

| NO. | Size | A | | B | |
|-----------|------|-------|-------|-------|-------|
| | | inch | mm | inch | mm |
| 5341 0100 | 1" | 1.911 | 48.5 | 3.822 | 97.1 |
| 5341 0150 | 1.5" | 2.598 | 66.0 | 5.196 | 132.0 |
| 5341 0200 | 2" | 3.099 | 78.7 | 6.198 | 157.4 |
| 5341 0250 | 2.5" | 3.505 | 89.0 | 7.01 | 178.0 |
| 5341 0300 | 3" | 3.817 | 96.9 | 7.634 | 193.9 |
| 5341 0400 | 4" | 4.786 | 121.6 | 9.572 | 243.1 |

**T304 and T316L are available.

31I-15FI I-LINE Male X Female Concentric Reducer

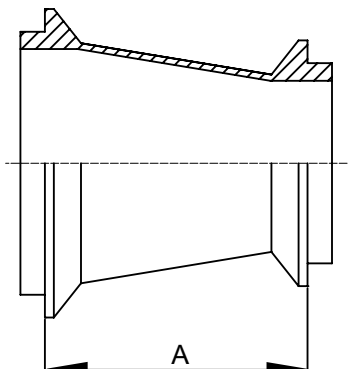


Basic Ordering Number: 5342

| NO. | Size | A | |
|------------|---------|------|-------|
| | | inch | mm |
| 5342 15100 | 1.5"x1" | 3.13 | 79.5 |
| 5342 20150 | 2"x1.5" | 3.09 | 78.5 |
| 5342 25200 | 2.5"x2" | 3.28 | 83.3 |
| 5342 30200 | 3"x2" | 5.38 | 136.6 |
| 5342 30250 | 3"x2.5" | 3.44 | 87.4 |
| 5342 40300 | 4"x3" | 5.66 | 143.8 |

**T304 and T316L are available.

31I-14FI I-LINE Male X Male Concentric Reducer



Basic Ordering Number: 5343

| NO. | Size | A | |
|------------|---------|------|-------|
| | | inch | mm |
| 5343 15100 | 1.5"x1" | 3.31 | 84.1 |
| 5343 20150 | 2"x1.5" | 3.25 | 82.5 |
| 5343 25200 | 2.5"x2" | 3.38 | 85.8 |
| 5343 30200 | 3"x2" | 4.69 | 119.1 |
| 5343 30250 | 3"x2.5" | 4.75 | 120.6 |
| 5343 40300 | 4"x3" | 4.91 | 124.7 |

**T304 and T316L are available.

NOTE! Treatment: Annealed.

**All measurements are in millimeters (mm)
Conversion to inches, 25.4mm=1inch

I line fittings

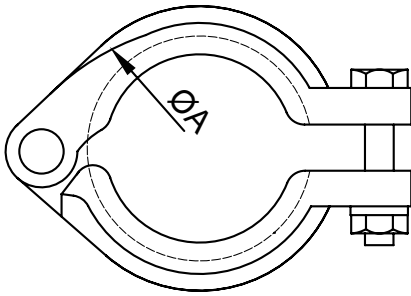
Part for ASTM A270 tubes

Finish: OD: Semi bright. ID: Mirror
Connections: Welding ends



1.1

13I Bolted I-Line Clamp

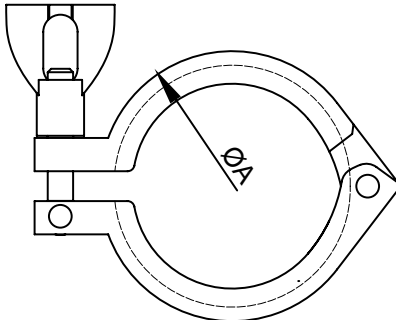


Basic Ordering Number: 5344

| NO. | Size | A | |
|-----------|------|-------|-------|
| | | inch | mm |
| 5344 0100 | 1" | 2.122 | 53.9 |
| 5344 0150 | 1.5" | 2.122 | 53.9 |
| 5344 0200 | 2" | 2.654 | 67.4 |
| 5344 0250 | 2.5" | 3.185 | 80.9 |
| 5344 0300 | 3" | 3.717 | 94.4 |
| 5344 0400 | 4" | 4.82 | 122.4 |

**T304 and T316L are available.

13IS Wing Nut I-Line Clamp

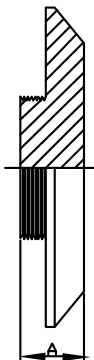


Basic Ordering Number: 5345

| NO. | Size | A | |
|-----------|------|-------|-------|
| | | inch | mm |
| 5345 0100 | 1" | 2.122 | 53.9 |
| 5345 0150 | 1.5" | 2.122 | 53.9 |
| 5345 0200 | 2" | 2.654 | 67.4 |
| 5345 0250 | 2.5" | 3.185 | 80.9 |
| 5345 0300 | 3" | 3.717 | 94.4 |
| 5345 0400 | 4" | 4.82 | 122.4 |

**T304 and T316L are available.

23BI I-LINE Male Thermometer Cap



Basic Ordering Number: 5346

| NO. | Size | A | |
|-----------|--------------|-------|---------|
| | | inch | mm |
| 5346 0100 | 1"x1/2 NPT | 0.505 | 12.827 |
| 5346 0150 | 1.5"x3/4 NPT | 0.505 | 12.827 |
| 5346 0200 | 2"x3/4 NPT | 0.505 | 12.827 |
| 5346 0250 | 2.5"x3/4 NPT | 0.692 | 17.5768 |
| 5346 0300 | 3"x3/4 NPT | 0.692 | 17.5768 |
| 5346 0400 | 4"x3/4 NPT | 0.755 | 19.177 |

**T304 and T316L are available.

**All measurements are in millimeters (mm)
Conversion to inches, 25.4mm=1inch

I line fittings

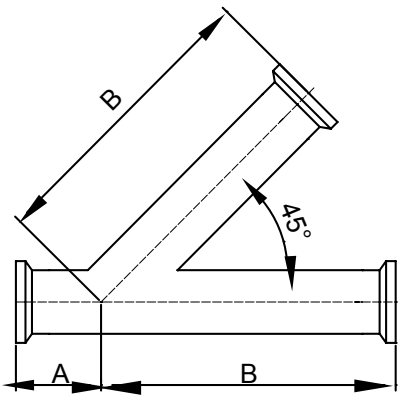
Part for ASTM A270 tubes



Finish: OD: Semi bright. ID: Mirror
Connections: Welding ends

28AI I-LINE Female Ends Lateral Wye

Basic Ordering Number: 5347

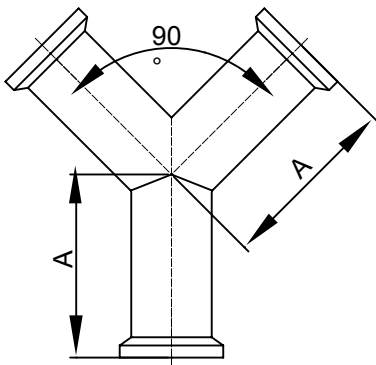


| NO. | Size | A | | B | |
|-----------|------|-------|------|--------|-------|
| | | inch | mm | inch | mm |
| 5347 0100 | 1" | 1.786 | 45.4 | 5.786 | 147.0 |
| 5347 0150 | 1.5" | 2.132 | 54.1 | 7.132 | 181.1 |
| 5347 0200 | 2" | 2.656 | 67.5 | 8.156 | 207.2 |
| 5347 0250 | 2.5" | 2.661 | 67.6 | 9.661 | 245.4 |
| 5347 0300 | 3" | 3.103 | 78.8 | 10.103 | 256.6 |
| 5347 0400 | 4" | 3.408 | 86.6 | 12.148 | 308.5 |

**T304 and T316L are available.

28BI I-LINE Female Ends True Wye

Basic Ordering Number: 5348



| NO. | Size | A | |
|-----------|------|-------|-------|
| | | inch | mm |
| 5348 0100 | 1" | 3.786 | 96.2 |
| 5348 0150 | 1.5" | 3.942 | 100.1 |
| 5348 0200 | 2" | 5.036 | 127.9 |
| 5348 0250 | 2.5" | 6.161 | 156.5 |
| 5348 0300 | 3" | 7.223 | 183.5 |
| 5348 0400 | 4" | 9.348 | 237.4 |

**T304 and T316L are available.

NOTE! Treatment: Annealed.

**All measurements are in millimeters (mm)
Conversion to inches, 25.4mm=1inch