

Bevel Seat fittings

Weld to the ASTM A270 tubing



Removal from the system is not required
EACH FITTINGS PACKAGING HAS A BARCODE

Catalog

Table of Contents page 45—59



Bevel Seat Fittings

Product Description&Specification...45

Elbows

2C.....	5226	51
2E.....	5227	52
2F.....	5228	52
2FMP-14.....	5229	52
2FMP-15.....	5230	53
L2C.....	5231	53
L2F.....	5232	53
2K.....	5233	54
2P.....	5234	54
L2K.....	5235	54
L2P.....	5236	55

Tees

7.....	5237	55
7A.....	5238	55
28A.....	5245	58
28B.....	5246	59
7A&7B.....	5247	59

Solid End Caps

16A.....	5225	51
----------	-------------	-------	----

Reducers

31TP.....	5239	56
31TT.....	5240	56
31MPT.....	5241	57
31MPP.....	5242	57

Hex Nut

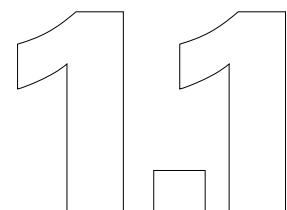
13H.....	5209	46
----------	-------------	-------	----

Ferrules

14PRF.....	5210	46
15TRF.....	5211	46
14A.....	5212	47
15A.....	5213	47
14WL.....	5214	47
15WL.....	5215	48
14AHT.....	5216	48
15AHT.....	5217	48
14W.....	5218	49
15W.....	5219	49
14.....	5220	49
15.....	5221	50
14R.....	5222	50
15R.....	5223	50
14AHR.....	5224	51
16A.....	5225	51

Adapters

14AHR.....	5224	51
17MP-14.....	5243	58
17MP-15.....	5244	58



1.1

Bevel Seat fittings

Bevel Seat Fittings are precision engineered and manufactured from stainless steel. Bevel Seat connections are made up of a plain bevel ferrule mating to a threaded bevel ferrule with a threaded hex nut. These fittings are designed and manufactured to withstand daily disassembly, COP (clean-out-of-place), and reassembly of process lines and equipment. A gasket can be used to ensure a positive shutoff under higher pressures, however is not necessary in lower pres-sure applications.



GEMO Bevel Seat Fittings meet



requirements.

BEVEL SEAT FITTINGS

SPECIFICATIONS....

- Size Range: 1" OD through 4" OD
- Materials: T304, T316L
- Surface Finish: Mechanically Polished
- Internal 20Ra (0.51µm), External 32Ra (0.8µm)
- No. 7 - ID & OD
- No. 5 - OD only
- No. 3 - ID only
- No. 1 - unpolished
- Custom - built upon request

ORDERING SPECIFICATIONS....

- Specify:
- Description
 - Item No.
 - Size
 - Material
 - Surface Polish Requirements
 - Quantity

Example

Description	Item No	Size	Material	Surface	Quantity
13H Nut	5209	2"	T304	NO.7	200

NOTES THE DIMENSION TABLES

- All Dimensions are in inch and mm.
- Wall Thickness: Fittings 1.0"-3.0" sizes are manufactured with 16 gauge (0.065") wall thickness. The 4.0" tube size is manufactured with 14 gauge (0.083") wall thickness.

Bevel Seat fittings

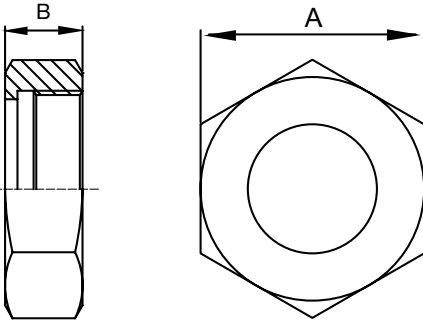
Part for ASTM A270 tubes

Finish: OD: Semi bright. ID: Mirror
Connections: Welding ends



1.1

13H Hex Nut B

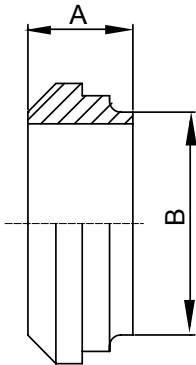


Basic Ordering Number: 5209

NO.	Size	A		B	
		inch	mm	inch	mm
5209 0100	1"	1.812	46.0	0.906	23.0
5209 0150	1.5"	2.406	61.1	0.968	24.6
5209 0200	2"	3	76.2	1.062	27.0
5209 0250	2.5"	3.594	91.3	1.187	30.1
5209 0300	3"	4.188	106.4	1.281	32.5
5209 0400	4"	5.438	138.1	1.5	38.1

**T304 and T316L are available.

14PRF Short Plain Bevel Seat Weld Ferrules

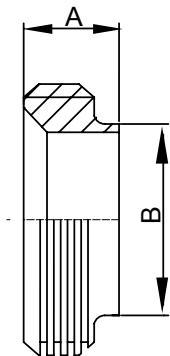


Basic Ordering Number: 5210

NO.	Size	A		B	
		inch	mm	inch	mm
5210 0100	1"	0.718	18.2	1	25.4
5210 0150	1.5"	0.718	18.2	1.5	38.1
5210 0200	2"	0.75	19.1	2	50.8
5210 0250	2.5"	0.875	22.2	2.5	63.5
5210 0300	3"	0.906	23.0	3	76.2
5210 0400	4"	1.031	26.2	4	101.6

**T304 and T316L are available.

15TRF Short Threaded Bevel Seat Ferrules



Basic Ordering Number: 5211

NO.	Size	A		B	
		inch	mm	inch	mm
5211 0100	1"	0.718	18.2	1	25.4
5211 0150	1.5"	0.718	18.2	1.5	38.1
5211 0200	2"	0.75	19.1	2	50.8
5211 0250	2.5"	0.875	22.2	2.5	63.5
5211 0300	3"	0.906	23.0	3	76.2
5211 0400	4"	1.031	26.2	4	101.6

**T304 and T316L are available.

**All measurements are in millimeters (mm)
Conversion to inches, 25.4mm=1inch

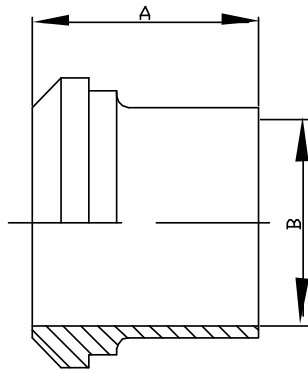
Bevel Seat fittings

Part for ASTM A270 tubes

Finish: OD: Semi bright. ID: Mirror
Connections: Welding ends



14A Long Plain Bevel Seat Weld Ferrules

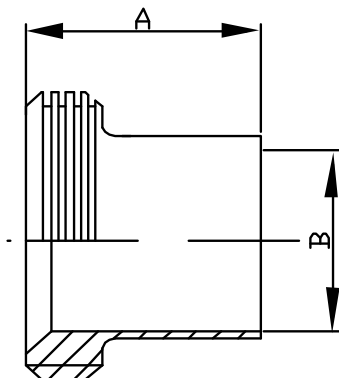


Basic Ordering Number: 5212

NO.	Size	A		B	
		inch	mm	inch	mm
5212 0100	1"	1.375	34.9	0.87	22.1
5212 0150	1.5"	1.5	38.1	1.37	34.8
5212 0200	2"	1.5	38.1	1.87	47.5
5212 0250	2.5"	1.75	44.4	2.37	60.2
5212 0300	3"	1.75	44.4	2.87	72.9
5212 0400	4"	1.75	44.4	3.834	97.4

**T304 and T316L are available.

15A Long Threaded Bevel Seat Weld Ferrules

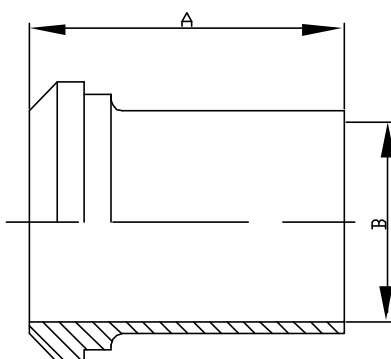


Basic Ordering Number: 5213

NO.	Size	A		B	
		inch	mm	inch	mm
5213 0100	1"	1.375	34.9	0.87	22.1
5213 0150	1.5"	1.5	38.1	1.37	34.8
5213 0200	2"	1.5	38.1	1.87	47.5
5213 0250	2.5"	1.75	44.4	2.37	60.2
5213 0300	3"	1.75	44.4	2.87	72.9
5213 0400	4"	1.75	44.4	3.834	97.4

**T304 and T316L are available.

14WL Light Wall Tank Plain Bevel Seat Ferrules



Basic Ordering Number: 5214

NO.	Size	A		B	
		inch	mm	inch	mm
5214 0100	1"	2	50.8	0.87	22.1
5214 0150	1.5"	2.25	57.1	1.37	34.8
5214 0200	2"	2.5	63.5	1.87	47.5
5214 0250	2.5"	2.75	69.8	2.37	60.2
5214 0300	3"	3	76.2	2.87	72.9
5214 0400	4"	4	101.6	3.834	97.4

**T304 and T316L are available.

NOTE! Treatment: Annealed.

**All measurements are in millimeters (mm)
Conversion to inches, 25.4mm=1inch

Bevel Seat fittings

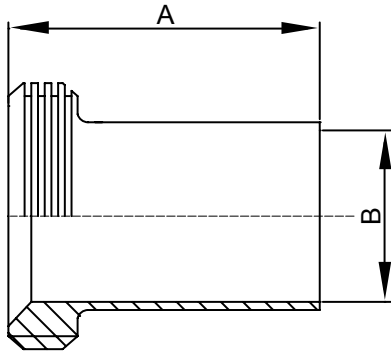
Part for ASTM A270 tubes

Finish: OD: Semi bright. ID: Mirror
Connections: Welding ends



1.1

15WL Light Wall Tank Threaded Bevel Seat Ferrules

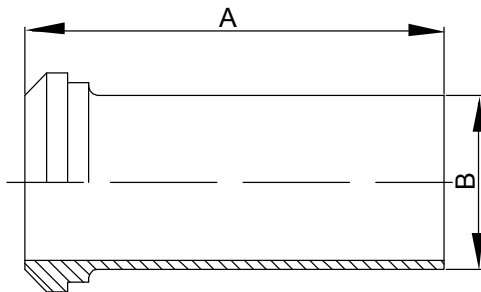


Basic Ordering Number: 5215

NO.	Size	A		B	
		inch	mm	inch	mm
5215 0100	1"	2	50.8	0.87	22.1
5215 0150	1.5"	2.25	57.1	1.37	34.8
5215 0200	2"	2.5	63.5	1.87	47.5
5215 0250	2.5"	2.75	69.8	2.37	60.2
5215 0300	3"	3	76.2	2.87	72.9
5215 0400	4"	4	101.6	3.834	97.4

**T304 and T316L are available.

14AHT Plain Bevel Seat Tygon Hose Adapters

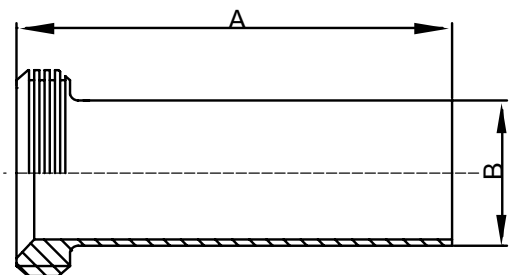


Basic Ordering Number: 5216

NO.	Size	A		B	
		inch	mm	inch	mm
5216 0100	1"	4.688	119.1	1	25.4
5216 0150	1.5"	4.719	119.9	1.5	38.1
5216 0200	2"	4.719	119.9	2	50.8
5216 0250	2.5"	4.844	123.0	2.5	63.5
5216 0300	3"	4.906	124.6	3	76.2
5216 0400	4"	5.218	132.5	4	101.6

**T304 and T316L are available.

15AHT Threaded Bevel Seat Tygon Hose Adapters



Basic Ordering Number: 5217

NO.	Size	A		B	
		inch	mm	inch	mm
5217 0100	1"	4.5	114.3	1	25.4
5217 0150	1.5"	4.5	114.3	1.5	38.1
5217 0200	2"	4.5	114.3	2	50.8
5217 0250	2.5"	4.5	114.3	2.5	63.5
5217 0300	3"	4.5	114.3	3	76.2
5217 0400	4"	5	127	4	101.6

**T304 and T316L are available.

**All measurements are in millimeters (mm)
Conversion to inches, 25.4mm=1inch

Bevel Seat fittings

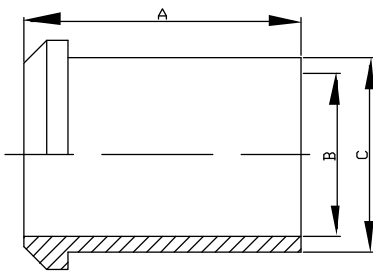
Part for ASTM A270 tubes

Finish: OD: Semi bright. ID: Mirror
Connections: Welding ends



14W Heavy Wall Tank Plain Bevel Seat Ferrules

Basic Ordering Number: 5218

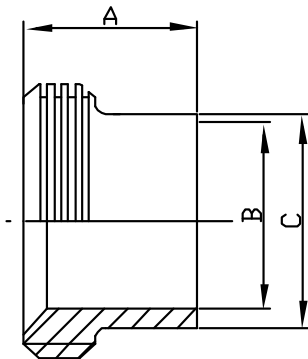


NO.	Size	A		B		C	
		inch	mm	inch	mm	inch	mm
5118 0100	1"	2.375	60.3	0.87	22.1	1.16	29.5
5118 0150	1.5"	2.531	64.3	1.37	34.8	1.676	42.6
5118 0200	2"	2.781	70.6	1.87	47.5	2.192	55.7
5118 0250	2.5"	3.062	77.8	2.37	60.2	2.708	68.8
5118 0300	3"	3.531	89.7	2.87	72.9	3.224	81.9
5118 0400	4"	4.312	109.5	3.834	97.4	4.256	108.1

**T304 and T316L are available.

15W Heavy Wall Tank Threaded Bevel Seat Ferrules

Basic Ordering Number: 5219

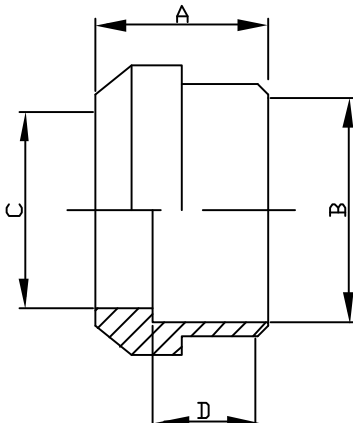


NO.	Size	A		B		C	
		inch	mm	inch	mm	inch	mm
5219 0100	1"	1.5	38.1	0.87	22.1	1.16	29.5
5219 0150	1.5"	1.625	41.3	1.37	34.8	1.676	42.6
5219 0200	2"	1.75	44.4	1.87	47.5	2.192	55.7
5219 0250	2.5"	1.75	44.4	2.37	60.2	2.708	68.8
5219 0300	3"	1.812	46.0	2.87	72.9	3.224	81.9
5219 0400	4"	2.125	54.0	3.834	97.4	4.256	108.1

**T304 and T316L are available.

14 Recessed Plain Bevel Seat Weld Ferrules

Basic Ordering Number: 5220



NO.	Size	A		B		C		D	
		inch	mm	inch	mm	inch	mm	inch	mm
5220 0100	1"	0.75	19.05	1	25.4	0.87	22.1	0.5	12.7
5220 0150	1.5"	0.875	22.2	1.5	38.1	1.37	34.8	0.625	15.9
5220 0200	2"	0.969	24.6	2	50.8	1.87	47.5	0.688	17.5
5220 0250	2.5"	1.062	27.0	2.5	63.5	2.37	60.2	0.75	19.05
5220 0300	3"	1.125	28.6	3	76.2	2.87	72.9	0.813	20.6
5220 0400	4"	1.25	31.7	4	101.6	3.834	97.4	0.938	23.8

**T304 and T316L are available.

NOTE! Treatment: Annealed.

**All measurements are in millimeters (mm)
Conversion to inches, 25.4mm=1inch

Bevel Seat fittings

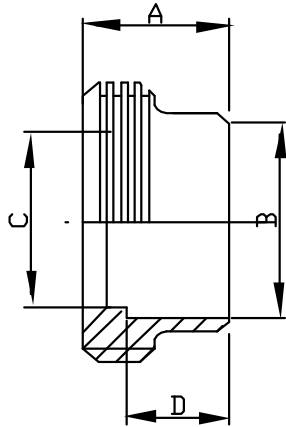
Part for ASTM A270 tubes

Finish: OD: Semi bright. ID: Mirror
Connections: Welding ends



1.1

15 Recessed Threaded Bevel Seat Ferrules

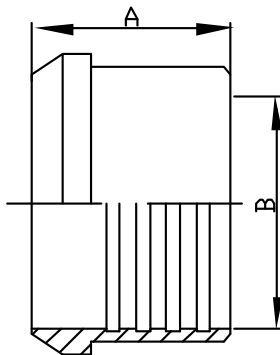


Basic Ordering Number: 5221

NO.	Size	A		B		C		D	
		inch	mm	inch	mm	inch	mm	inch	mm
5221 0100	1"	0.812	20.6	1	25.4	0.87	22.1	0.5	12.7
5221 0150	1.5"	0.875	22.2	1.5	38.1	1.37	34.8	0.625	15.9
5221 0200	2"	1.031	26.2	2	50.8	1.87	47.5	0.687	17.4
5221 0250	2.5"	1.125	28.6	2.5	63.5	2.37	60.2	0.75	19.05
5221 0300	3"	1.25	31.7	3	76.2	2.87	72.9	0.812	20.6
5221 0400	4"	1.375	34.9	4	101.6	3.834	97.4	0.937	23.9

**T304 and T316L are available.

14R Recessless (Roll-on) Plain Bevel Seat Weld Ferrules for Expanding

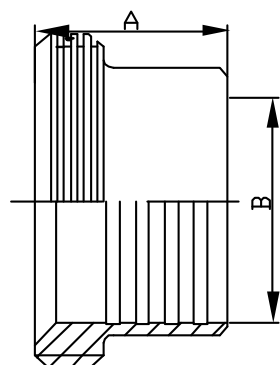


Basic Ordering Number: 5222

NO.	Size	A		B	
		inch	mm	inch	mm
5222 0100	1"	0.75	19.05	1	25.4
5222 0150	1.5"	1.125	28.6	1.5	38.1
5222 0200	2"	1.312	33.3	2	50.8
5222 0250	2.5"	1.375	34.9	2.5	63.5
5222 0300	3"	1.437	36.5	3	76.2
5222 0400	4"	1.5	38.1	4	101.6

**T304 and T316L are available.

15R Recessless (Roll-on) Threaded Bevel Seat Ferrules for Expanding



Basic Ordering Number: 5223

NO.	Size	A		B	
		inch	mm	inch	mm
5223 0100	1"	0.812	20.6	1	25.4
5223 0150	1.5"	1.125	28.6	1.5	38.1
5223 0200	2"	1.375	34.9	2	50.8
5223 0250	2.5"	1.5	38.1	2.5	63.5
5223 0300	3"	1.675	42.5	3	76.2
5223 0400	4"	1.675	42.5	4	101.6

**T304 and T316L are available.

**All measurements are in millimeters (mm)
Conversion to inches, 25.4mm=1inch

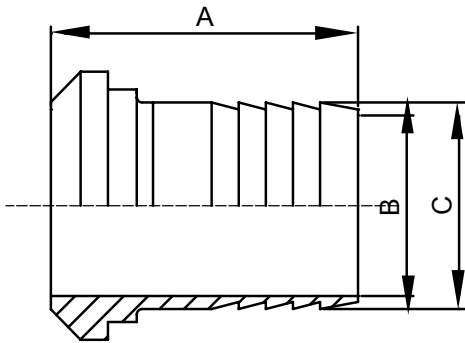
Bevel Seat fittings

Part for ASTM A270 tubes

Finish: OD: Semi bright. ID: Mirror
Connections: Welding ends



14AHR Plain Bevel Seat Rubber Hose Adapters

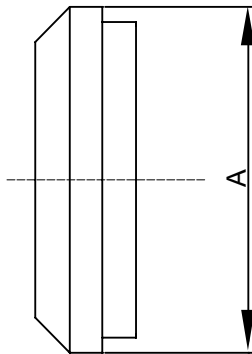


Basic Ordering Number: 5224

NO.	Size	A		B		C	
		inch	mm	inch	mm	inch	mm
5220 0100	1"	1.7	42.8	0.87	22.1	1	25.4
5220 0150	1.5"	1.7	42.8	1.37	34.8	1.5	38.1
5220 0200	2"	2.3	58.7	1.87	47.5	2	50.8
5220 0250	2.5"	2.3	59.5	2.37	60.2	2.5	63.5
5220 0300	3"	3.5	88.9	2.87	72.9	3	76.2
5220 0400	4"	4.0	101.6	3.834	97.4	4	101.6

**T304 and T316L are available.

16A Plain Bevel Seat Solid End Caps

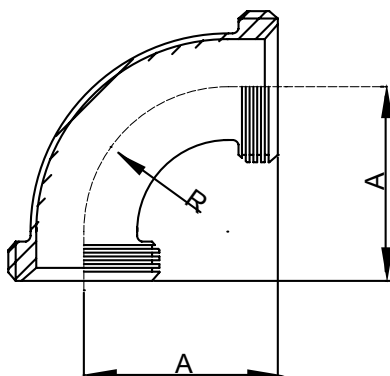


Basic Ordering Number: 5225

NO.	Size	A	
		inch	mm
5225 0100	1"	1.312	33.3
5225 0150	1.5"	1.843	46.8
5225 0200	2"	2.375	60.3
5225 0250	2.5"	2.906	73.8
5225 0300	3"	3.437	87.3
5225 0400	4"	4.5	114.3

**T304 and T316L are available.

2C Thread X Thread Bevel Seat 90 Degree Elbow



Basic Ordering Number: 5226

NO.	Size	A		B	
		inch	mm	inch	mm
5226 0100	1"	2.218	56.3	1	25.4
5226 0150	1.5"	2.968	75.4	1.5	38.1
5226 0200	2"	3.75	95.2	2	50.8
5226 0250	2.5"	4.625	117.5	2.5	63.5
5226 0300	3"	5.406	137.3	3	76.2
5226 0400	4"	7.031	178.6	4	101.6

**T304 and T316L are available.

NOTE! Treatment: Annealed.

**All measurements are in millimeters (mm)
Conversion to inches, 25.4mm=1inch

Bevel Seat fittings

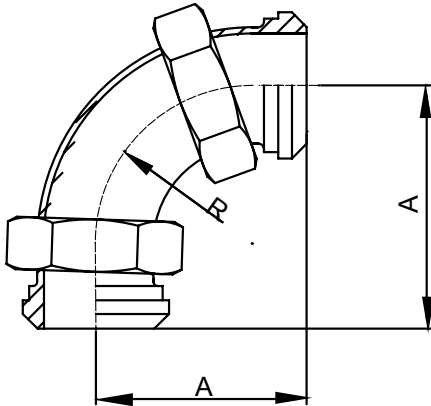
Part for ASTM A270 tubes

Finish: OD: Semi bright. ID: Mirror
Connections: Welding ends



1.1

2E
Plain X Plain Bevel Seat 90 Degree Elbow

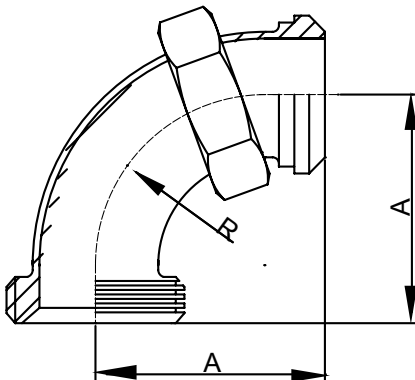


Basic Ordering Number: 5227

NO.	Size	A		B	
		inch	mm	inch	mm
5227 0100	1"	2.218	56.3	1	25.4
5227 0150	1.5"	2.969	75.4	1.5	38.1
5227 0200	2"	3.75	95.2	2	50.8
5227 0250	2.5"	4.625	117.5	2.5	63.5
5227 0300	3"	5.406	137.3	3	76.2
5227 0400	4"	7.031	178.6	4	101.6

**T304 and T316L are available.

2F
Thread X Plain Bevel Seat 90 Degree Elbow

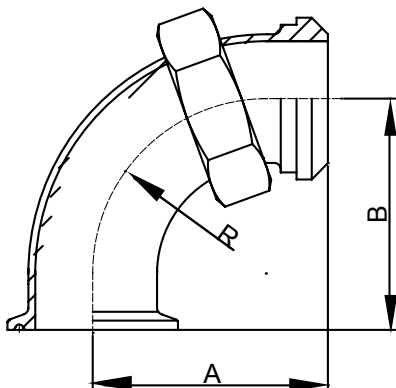


Basic Ordering Number: 5228

NO.	Size	A	
		inch	mm
5228 0100	1"	2.218	56.3
5228 0150	1.5"	2.969	75.4
5228 0200	2"	3.75	95.2
5228 0250	2.5"	4.625	117.5
5228 0300	3"	5.406	137.3
5228 0400	4"	7.031	178.6

**T304 and T316L are available.

2FMP-14
Clamp X Plain Bevel Seat 90 Degree Elbow



Basic Ordering Number: 5229

NO.	Size	A		B	
		inch	mm	inch	mm
5229 0100	1"	2.218	56.3	2	50.8
5229 0150	1.5"	2.969	75.4	2.75	69.85
5229 0200	2"	3.75	95.2	3.5	88.9
5229 0250	2.5"	4.625	117.5	4.25	107.95
5229 0300	3"	5.406	137.3	5	127
5229 0400	4"	7.031	178.6	6.625	168.275

**T304 and T316L are available.

**All measurements are in millimeters (mm)
Conversion to inches, 25.4mm=1inch

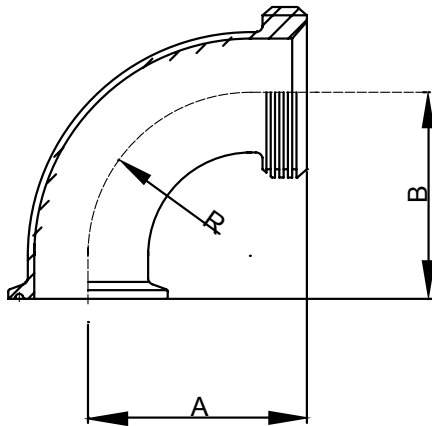
Bevel Seat fittings

Part for ASTM A270 tubes

Finish: OD: Semi bright. ID: Mirror
Connections: Welding ends



2FMP-15
Clamp X Threaded Bevel Seat 90 Degree Elbow

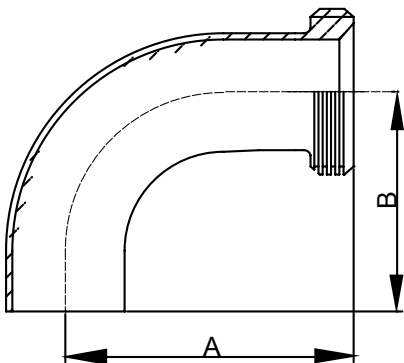


Basic Ordering Number: 5230

NO.	Size	A		B	
		inch	mm	inch	mm
5230 0100	1"	2.218	56.3	2	50.8
5230 0150	1.5"	2.968	75.4	2.75	69.9
5230 0200	2"	3.75	95.3	3.5	88.9
5230 0250	2.5"	4.625	117.5	4.25	108.0
5230 0300	3"	5.406	137.3	5	127.0
5230 0400	4"	7.031	178.6	6.625	168.3

**T304 and T316L are available.

L2C
Weld X Threaded Bevel Seat 90 Degree Elbow

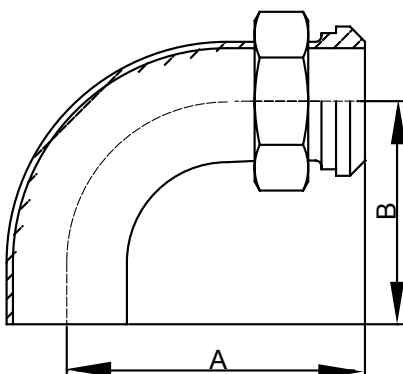


Basic Ordering Number: 5231

NO.	Size	A		B	
		inch	mm	inch	mm
5231 0100	1"	2.78	70.6	2.062	52.4
5231 0150	1.5"	3.656	92.9	2.937	74.6
5231 0200	2"	4.812	122.2	4.062	103.2
5231 0250	2.5"	6.062	154.0	5.187	131.7
5231 0300	3"	7.218	183.3	6.312	160.3
5231 0400	4"	9.343	237.3	8.312	211.1

**T304 and T316L are available.

L2F
Weld X Plain Bevel Seat 90 Degree Elbow



Basic Ordering Number: 5232

NO.	Size	A		B	
		inch	mm	inch	mm
5232 0100	1"	2.78	70.6	2.062	52.4
5232 0150	1.5"	3.656	92.9	2.937	74.6
5232 0200	2"	4.812	122.2	4.062	103.2
5232 0250	2.5"	6.062	154.0	5.187	131.7
5232 0300	3"	7.218	183.3	6.312	160.3
5232 0400	4"	9.343	237.3	8.312	211.1

**T304 and T316L are available.

NOTE! Treatment: Annealed.

**All measurements are in millimeters (mm)
Conversion to inches, 25.4mm=1inch

Bevel Seat fittings

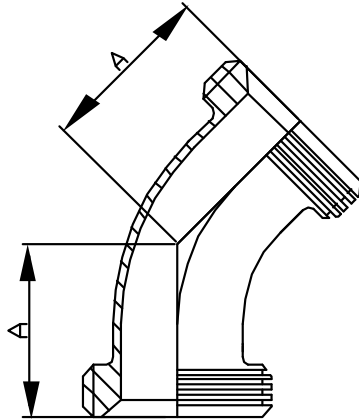
Part for ASTM A270 tubes

Finish: OD: Semi bright. ID: Mirror
Connections: Welding ends



1.1

2K Thread X Thread Bevel Seat 45 Degree Elbow

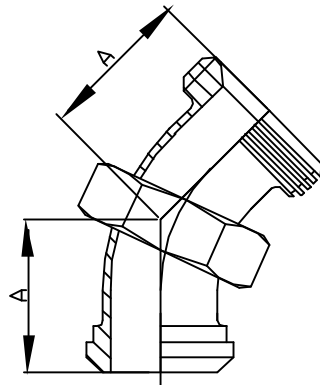


Basic Ordering Number: 5233

NO.	Size	A	
		inch	mm
5233 0100	1"	1.343	34.1
5233 0150	1.5"	1.655	42.0
5233 0200	2"	2	50.8
5233 0250	2.5"	2.437	61.9
5233 0300	3"	2.781	70.6
5233 0400	4"	3.531	89.7

**T304 and T316L are available.

2P Thread X Plain Bevel Seat 45 Degree Elbow

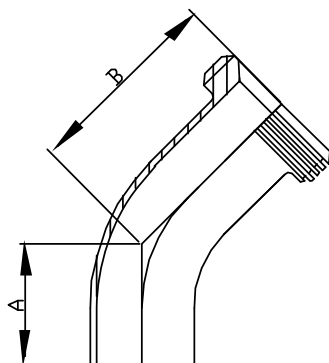


Basic Ordering Number: 5234

NO.	Size	A	
		inch	mm
5234 0100	1"	1.343	34.1
5234 0150	1.5"	1.655	42.0
5234 0200	2"	2	50.8
5234 0250	2.5"	2.437	61.9
5234 0300	3"	2.781	70.6
5234 0400	4"	3.531	89.7

**T304 and T316L are available.

L2K Weld X Threaded Bevel Seat 45 Degree Elbow



Basic Ordering Number: 5235

NO.	Size	A		B	
		inch	mm	inch	mm
5235 0100	1"	1.188	30.2	1.907	48.4
5235 0150	1.5"	1.625	41.3	2.344	59.5
5235 0200	2"	2.312	58.7	3.031	77.0
5235 0250	2.5"	3	76.2	3.719	94.5
5235 0300	3"	3.688	93.7	4.406	111.9
5235 0400	4"	4.812	122.2	5.531	140.5

**T304 and T316L are available.

**All measurements are in millimeters (mm)
Conversion to inches, 25.4mm=1inch

Bevel Seat fittings

Part for ASTM A270 tubes



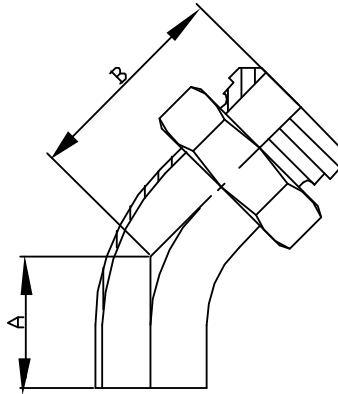
TUBES AND FITTINGS **GEMO**

Finish: OD: Semi bright. ID: Mirror
Connections: Welding ends

1.1

L2P

Weld X Plain Bevel Seat 45 Degree Elbow



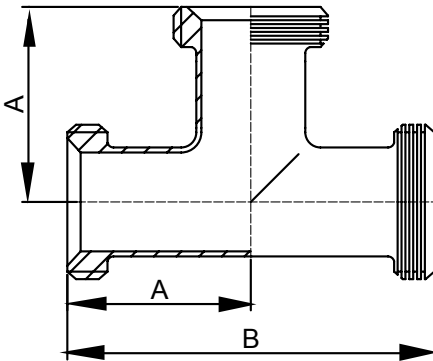
Basic Ordering Number: 5236

NO.	Size	A		B	
		inch	mm	inch	mm
5236 0100	1"	1.188	30.2	1.875	47.6
5236 0150	1.5"	1.625	41.3	2.344	59.5
5236 0200	2"	2.312	58.7	3.035	77.1
5236 0250	2.5"	3	76.2	3.844	97.6
5236 0300	3"	3.688	93.7	4.59	116.6
5236 0400	4"	4.812	122.2	5.812	147.6

**T304 and T316L are available.

7

Bevel Seat Threaded Ends Equal Tee



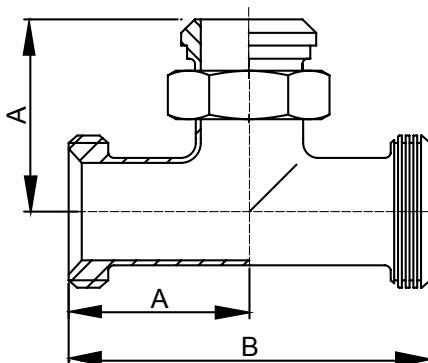
Basic Ordering Number: 5237

NO.	Size	A		B	
		inch	mm	inch	mm
5237 0100	1"	1.813	46.0	3.626	92.1
5237 0150	1.5"	2.375	60.3	4.75	120.6
5237 0200	2"	2.813	71.4	5.626	142.9
5237 0250	2.5"	3.188	81.0	6.376	161.9
5237 0300	3"	3.527	89.6	7.054	179.2
5237 0400	4"	4.657	118.3	9.314	236.6

**T304 and T316L are available.

7A

Thread X Thread X Plain Bevel Seat Outlet Equal Tee



Basic Ordering Number: 5238

NO.	Size	A		B		C	
		inch	mm	inch	mm	inch	mm
5238 0100	1"	1.813	46.0	3.626	92.1	1.812	46.0
5238 0150	1.5"	2.375	60.3	4.75	120.6	2.375	60.3
5238 0200	2"	2.813	71.4	5.626	142.9	2.786	70.8
5238 0250	2.5"	3.188	81.0	6.376	161.9	3.188	81.0
5238 0300	3"	3.527	89.6	7.054	179.2	3.5	88.9
5238 0400	4"	4.657	118.3	9.314	236.6	4.438	112.7

**T304 and T316L are available.

NOTE! Treatment: Annealed.

**All measurements are in millimeters (mm)
Conversion to inches, 25.4mm=1inch

Bevel Seat fittings

Part for ASTM A270 tubes

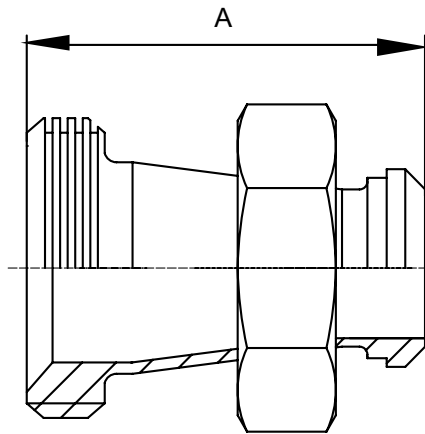
Finish: OD: Semi bright. ID: Mirror
Connections: Welding ends



1.1

31TP Threaded X Plain Bevel Seat Concentric Reducer

Basic Ordering Number: 5239

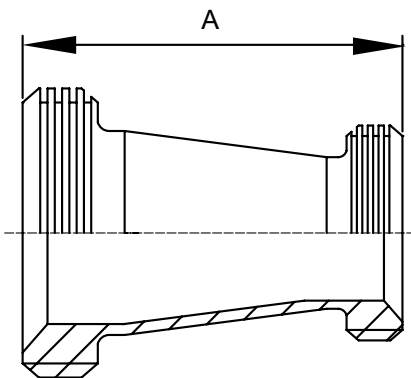


NO.	Size	A	
		inch	mm
5239 01510	1.5"x1"	3.436	87.3
5239 02520	2.5"x2"	3.625	92.1
5239 02015	2"x1.5"	3.468	88.1
5239 03020	3"x2"	5.656	143.7
5239 03025	3"x2.5"	3.781	96.0
5239 04030	4"x3"	5.937	150.8

**T304 and T316L are available.

31TT Threaded Ends Bevel Seat Concentric Reducer

Basic Ordering Number: 5240



NO.	Size	A		B	
		inch	mm	inch	mm
5240 01510	1.5"x1"	3.436	87.3	1.875	47.6
5240 02520	2.5"x2"	3.625	92.1	2.344	59.5
5240 02015	2"x1.5"	3.468	88.1	3.035	77.1
5240 03020	3"x2"	5.656	143.7	3.844	97.6
5240 03025	3"x2.5"	3.781	96.0	4.59	116.6
5240 04030	4"x3"	5.937	150.8	5.812	147.6

**T304 and T316L are available.

**All measurements are in millimeters (mm)
Conversion to inches, 25.4mm=1inch

Bevel Seat fittings

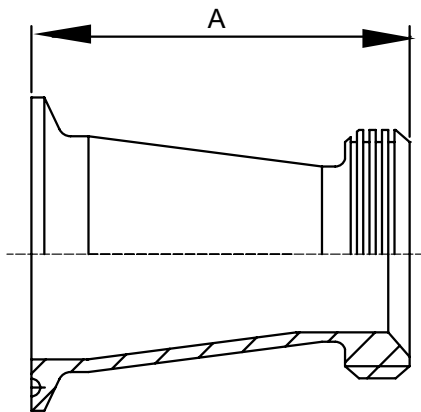
Part for ASTM A270 tubes



Finish: OD: Semi bright. ID: Mirror
Connections: Welding ends

31MPT Clamp X Threaded Bevel Seat Concentric Reducer

Basic Ordering Number: 5241

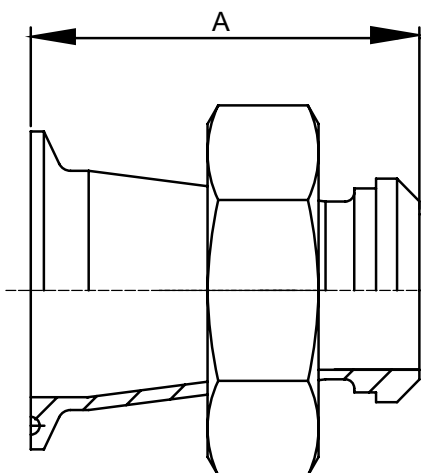


NO.	Size	A	
		inch	mm
5241 01510	1.5"x1"	3.188	81.0
5241 02515	2.5"x1.5"	5.219	132.6
5241 02520	2.5"x2"	3.219	81.8
5241 02010	2"x1"	5.188	131.8
5241 02015	2"x1.5"	3.188	81.0
5241 03020	3"x2"	5.406	137.3
5241 03025	3"x2.5"	3.406	86.5
5241 04025	4"x2.5"	7.719	196.1
5241 04030	4"x3"	5.719	145.3

**T304 and T316L are available.

31MPP Clamp X Plain Bevel Seat Concentric Reducer

Basic Ordering Number: 5242



NO.	Size	A	
		inch	mm
5242 01510	1.5"x1"	3.875	98.4
5242 02515	2.5"x1.5"	5.219	132.6
5242 02520	2.5"x2"	3.219	81.8
5242 02010	2"x1"	5.188	131.8
5242 02015	2"x1.5"	3.219	81.8
5242 03020	3"x2"	5.406	137.3
5242 03025	3"x2.5"	3.406	86.5
5242 04025	4"x2.5"	7.719	196.1
5242 04030	4"x3"	5.719	145.3

**T304 and T316L are available.

NOTE! Treatment: Annealed.

**All measurements are in millimeters (mm)
Conversion to inches, 25.4mm=1inch

Bevel Seat fittings

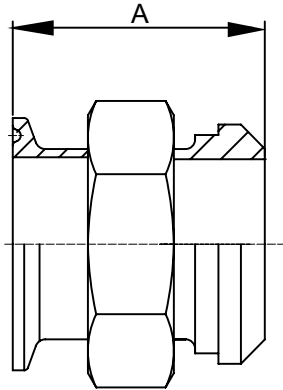
Part for ASTM A270 tubes

Finish: OD: Semi bright. ID: Mirror
Connections: Welding ends



1.1

17MP-14 Clamp X Plain Bevel Seat Adapters

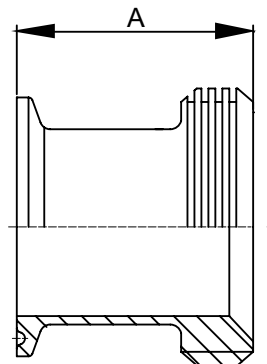


Basic Ordering Number: 5243

NO.	Size	A	
		inch	mm
5243 0100	1"	3	76.2
5243 0150	1.5"	3	76.2
5243 0200	2"	3	76.2
5243 0250	2.5"	3.5	88.9
5243 0300	3"	3.75	95.2
5243 0400	4"	4	101.6

**T304 and T316L are available.

17MP-15 Clamp X Threaded Bevel Seat Adapters

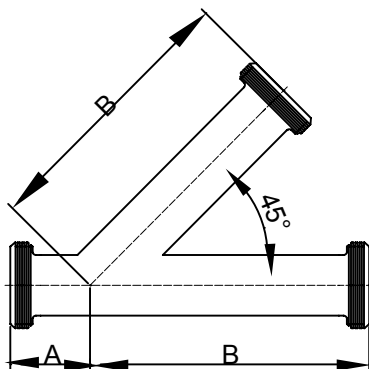


Basic Ordering Number: 5244

NO.	Size	A	
		inch	mm
5244 0100	1"	1.813	46.0
5244 0150	1.5"	1.844	46.8
5244 0200	2"	1.875	47.6
5244 0250	2.5"	2	50.8
5244 0300	3"	2.031	51.6
5244 0400	4"	2.156	54.8

**T304 and T316L are available.

28A Threaded Ends Lateral Wye



Basic Ordering Number: 5245

NO.	Size	A		B	
		inch	mm	inch	mm
5245 0100	1"	1.688	42.9	5.688	144.5
5245 0150	1.5"	1.908	48.5	6.906	175.4
5245 0200	2"	2.37	60.2	7.875	200.0
5245 0250	2.5"	2.375	60.3	9.344	237.3
5245 0300	3"	2.808	71.3	9.808	249.1
5245 0400	4"	3.282	83.4	12.006	305.0

**T304 and T316L are available.

**All measurements are in millimeters (mm)
Conversion to inches, 25.4mm=1inch

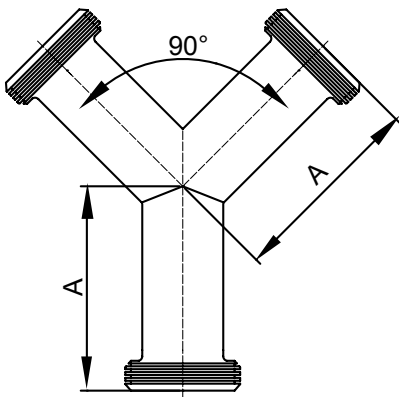
Bevel Seat fittings

Part for ASTM A270 tubes



Finish: OD: Semi bright. ID: Mirror
Connections: Welding ends

28B
Threaded Ends True Wye

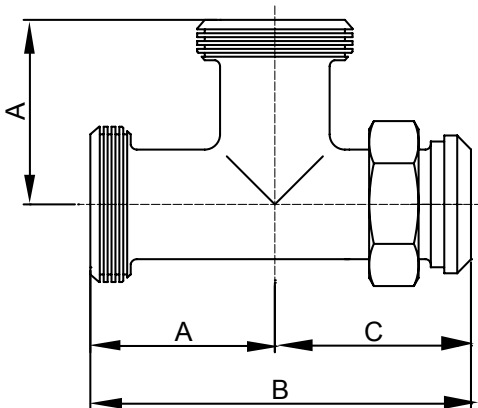


Basic Ordering Number: 5246

NO.	Size	A	
		inch	mm
5246 0100	1"	3.688	93.6752
5246 0150	1.5"	3.718	94.4372
5246 0200	2"	4.75	120.65
5246 0250	2.5"	5.844	148.4376
5246 0300	3"	6.933	176.0982
5246 0400	4"	9.219	234.1626

**T304 and T316L are available.

7A&7B TEE



Basic Ordering Number: 5247

NO.	Size	A		B		C	
		inch	mm	inch	mm	inch	mm
5247 0100	1"	1.81	46.0	3.63	92.2	2.69	68.3
5247 0150	1.5"	2.34	59.4	4.69	119.1	3.41	86.6
5247 0200	2"	2.78	70.6	5.56	141.2	3.71	94.2
5247 0250	2.5"	3.19	81.0	6.38	162.1	4.25	108.0
5247 0300	3"	3.53	89.3	7.06	179.3	4.63	117.6
5247 0400	4"	4.66	118.4	9.31	236.5	6.13	155.7

**T304 and T316L are available.

NOTE! Treatment: Annealed.

**All measurements are in millimeters (mm)
Conversion to inches, 25.4mm=1inch