

## SMS Unions



SMS Unions

All acc. to Swedish Standard

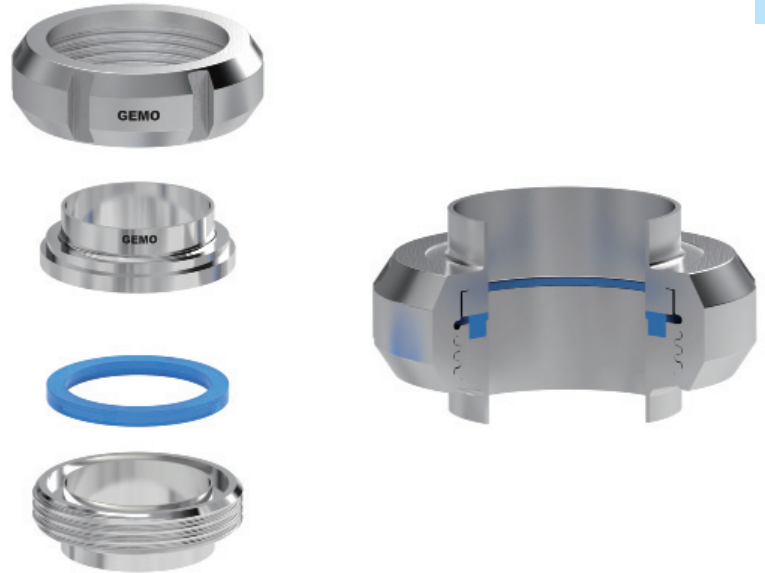
EACH FITTINGS PACKAGING HAS A BARCODE

\*\*All measurements are in millimeters (mm)  
Conversion to inches, 25.4mm=1inch

## SMS UNIONS

SMS union is the Swedish standard hygienic fitting. It can be recognized by the round slotted nut and square section joint ring. Probably the most widely used hygienic fitting worldwide, there is always a small crevice between the face of the male spigot and the liner. Therefore, it facilitates the removal of sections of pipe work without the need of to disturb adjacent sections.

**GEMO** SMS Union meet



# SMS

requirements.

### FITTINGS SPECIFICATIONS....

Size Range: OD.25 through OD.101.6  
 Materials: 1.4301(304), 1.4404(316L)  
 Processing: Forging  
 Machined by CNC  
 Internal 20Ra(0.51µm)  
 Working Pressure Range, (Fully Forged Unions):  
 SIZE 25 - 38 Max. Working Pressure 40 Bar @ 20°C  
 SIZE 51 - 76 Max. Working Pressure 25 Bar @ 20°C  
 SIZE 101.6 Max. Working Pressure 16 Bar @ 20°C

### ORDERING SPECIFICATIONS....

Specify:

- Description
- Code No.
- Size
- Material
- Surface Polish Requirements
- Quantity

### Example

Description	Item No	Size	Material	Surface	Quantity
SM-13	8022 05100	DN51	1.4301	Ra≤0.8µm	500

### NOTES THE DIMENSION TABLES

- All Dimensions are according to SMS standard.
- Wall Thickness: Fittings OD25mm-OD51mm sizes are manufactured with 1.25 mm wall thickness. The OD63.5 fittings size is manufactured with 1.5mm wall thickness. The OD76.1 fittings size is manufactured with 1.6mm wall thickness. And the OD101.6 fittings size is manufactured with 2.0mm wall thickness.

\*\*All measurements are in millimeters (mm)  
 Conversion to inches, 25.4mm=1inch

# SMS UNIONS

Part for Inch tubes

Wall Thickness: Fittings OD25-OD51mm sizes can also manufactured with 1.6mm wall thickness.

Finish: OD: Semi bright. ID: Semi bright

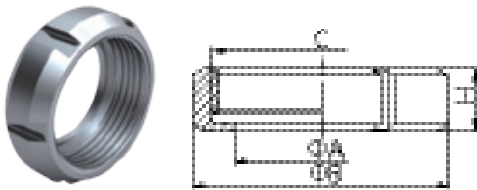
Connections: Welding ends

Seals: Silicone

Thread: Round type 

1.3

## SMS-13 Nut

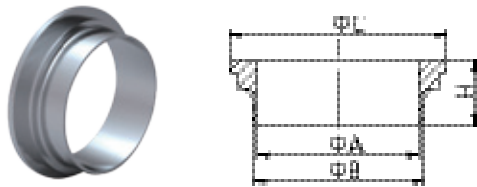


### Basic Ordering Number: 8022

NO.	Size	A	B	C	H
8022 02500	25	32	51	Rd40×1/6"	20
8022 03200	32	40.5	60	Rd48×1/6"	22
8022 03800	38	48	74	Rd60×1/6"	25
8022 05100	51	61	84	Rd70×1/6"	26
8022 06350	63.5	74	100	Rd85×1/6"	30
8022 07600	76	87	114	Rd98×1/6"	32
8022 10160	101.6 (Max)	117	154	Rd132×1/6"	45
8022 10160	101.6 (Min)	113	140	Rd125×1/4"	32

\*\*Only 1.4301 is available.

## SMS-14 Welding liner

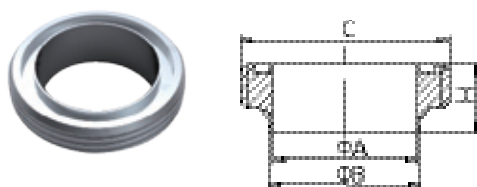


### Basic Ordering Number: 8023

NO.	Size	A	B	C	H
8023 02500	25	22.5	25	35.5	15
8023 03200	32	29.5	32	43.5	15
8023 03800	38	35.5	38	55	20
8023 05100	51	48.5	51	65	20
8023 06350	63.5	60.5	63.5	80	24
8023 07600	76	72.9	76.1	93	24
8023 10160	101.6 (Max)	97.6	101.6	127	30
8023 10160	101.6 (Min)	97.6	101.6	118	30

\*\*1.4301 and 1.4404 are available.

## SMS-15 Welding male



### Basic Ordering Number: 8024

NO.	Size	A	B	C	H
8024 02500	25	22.5	25	Rd40×1/6"	19
8024 03200	32	29.5	32	Rd48×1/6"	19
8024 03800	38	35.5	38	Rd60×1/6"	23
8024 05100	51	48.5	51	Rd70×1/6"	23
8024 06350	63.5	60.5	63.5	Rd85×1/6"	27
8024 07600	76	72.9	76.1	Rd98×1/6"	27
8024 10160	101.6 (Max)	97.6	101.6	Rd132×1/6"	35
8024 10160	101.6 (Min)	97.6	101.6	Rd125×1/4"	30

\*\*1.4301 and 1.4404 are available.

NOTE! Treatment: CNC Finished


\*\*All measurements are in millimeters (mm)  
Conversion to inches, 25.4mm=1inch

# SMS UNIONS

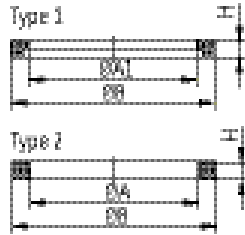
Part for Inch tubes

Wall Thickness: Fittings OD25-OD51mm sizes can also manufactured with 1.6mm wall thickness.

## TUBES AND FITTINGS **GEMO**

Finish: OD: Semi bright. ID: Semi bright  
 Connections: Welding ends  
 Seals: Silicone  
 Thread: Round type 

### Seal ring

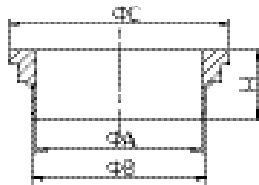


#### Basic Ordering Number: 8025

NO.	Size	A	A1	B	H
8025 02500	25	25	22.7	31.8	5.3
8025 03200	32	32	29.7	39.8	5.3
8025 03800	38	38	35.7	47.8	5.3
8025 05100	51	51	45.5	60.8	5.3
8025 06350	63.5	63.5	60.7	73.2	5.3
8025 07600	76	76	72.3	85.8	5.3
8025 10160	101.6	101.6	97.8	103.8	5.3

\*\*Silicone and EPDM are available.

### SMS-14S Welding liner

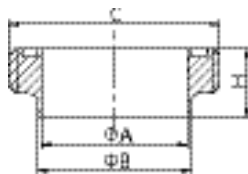


#### Basic Ordering Number: 8026

NO.	Size	A	B	C	H
8026 02500	25	22.5	25	35.5	10
8026 03200	32	29.5	32	43.5	10
8026 03800	38	35.5	38	55	11
8026 05100	51	48.5	51	65	13
8026 06350	63.5	60.5	63.5	80	13
8026 07600	76	72.9	76.1	93	14
8026 10160	101.6 (Max)	97.6	101.6	127	16
8026 10160	101.6 (Min)	97.6	101.6	118	16

\*\*1.4301 and 1.4404 are available.

### SMS-15S Welding male



#### Basic Ordering Number: 8027

NO.	Size	A	B	C	H
8027 02500	25	22.5	25	Rd40×1/6"	15
8027 03200	32	29.5	32	Rd48×1/6"	15
8027 03800	38	35.5	38	Rd60×1/6"	20
8027 05100	51	48.5	51	Rd70×1/6"	20
8027 06350	63.5	60.5	63.5	Rd85×1/6"	24
8027 07600	76	72.9	76.1	Rd98×1/6"	24
8027 10160	101.6 (Max)	97.6	101.6	Rd132×1/6"	28
8027 10160	101.6 (Min)	97.6	101.6	Rd125×1/4"	28

\*\*1.4301 and 1.4404 are available.

NOTE! Treatment: CNC Finished

\*\*All measurements are in millimeters (mm)  
 Conversion to inches, 25.4mm=1inch

# SMS UNIONS

Part for Inch tubes

Wall Thickness: Fittings OD25-OD51mm sizes can also manufactured with 1.6mm wall thickness.

Finish: OD: Semi bright. ID: Semi bright

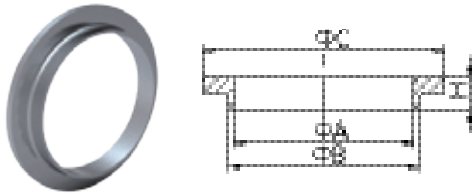
Connections: Welding ends

Seals: Silicone

Thread: Round type 

1.3

## SMS-14SS Welding liner

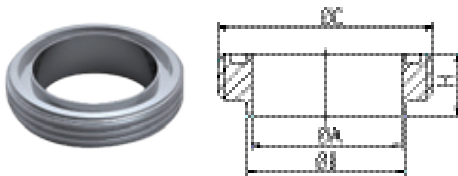


### Basic Ordering Number: 8028

NO.	Size	A	B	C	H
8028 02500	25	22.5	25	35.5	7.5
8028 03200	32	29.5	32	43.5	7.5
8028 03800	38	35.5	38	55	9
8028 05100	51	48.5	51	65	9
8028 06350	63.5	60.5	63.5	80	9
8028 07600	76	72.9	76.1	93	10
8028 10160	101.6 (Max)	97.6	101.6	127	12
8028 10160	101.6 (Min)	97.6	101.6	118	12

\*\*1.4301 and 1.4404 are available.

## SMS-15SS Welding male

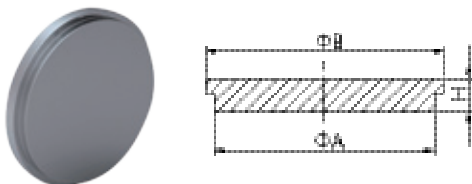


### Basic Ordering Number: 8029

NO.	Size	A	B	C	H
8029 02500	25	22.5	25	RD40×1/6"	15
8029 03200	32	29.5	32	RD48×1/6"	15
8029 03800	38	35.5	38	RD60×1/6"	18
8029 05100	51	48.5	51	RD70×1/6"	20
8029 06350	63.5	60.5	63.5	RD85×1/6"	20
8029 07600	76	72.9	76.1	RD98×1/6"	21
8029 10160	101.6 (Max)	97.6	101.6	RD125×1/4	26

\*\*1.4301 and 1.4404 are available.

## SMS-14B Blank liner



### Basic Ordering Number: 8030

NO.	Size	A	B	H
8030 02500	25	31.5	35.5	7.5
8030 03200	32	40	43.5	8
8030 03800	38	31.5	55	8
8030 05100	51	40	65	8
8030 06350	63.5	73.5	80	9
8030 07600	76	86.5	93	11
8030 10160	101.6 (Max)	116.5	127	12
8030 10160	101.6 (Min)	112.5	118	12

\*\*1.4301 and 1.4404 are available.


NOTE! Treatment: CNC Finished

\*\*All measurements are in millimeters (mm)  
Conversion to inches, 25.4mm=1inch

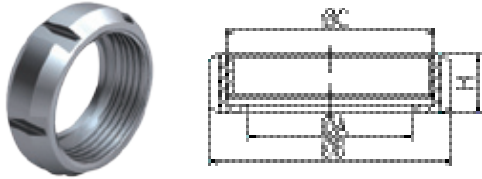
# SMS UNIONS

Part for Inch tubes

Wall Thickness: Fittings OD25-OD51mm sizes can also manufactured with 1.6mm wall thickness.

Finish: OD: Semi bright. ID: Semi bright  
 Connections: Welding ends  
 Seals: Silicone  
 Thread: Round type 

## SMS-13RS Nut

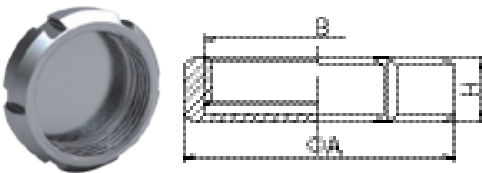


### Basic Ordering Number: 8031

NO.	Size	A	B	C	H
8031 02500	25	32.3	50	Rd40×1/6"	18
8031 03200	32	40.3	58	Rd48×1/6"	18
8031 03800	38	48.5	72	Rd60×1/6"	21
8031 05100	51	60.5	82	Rd70×1/6"	23
8031 06350	63.5	74	98	Rd85×1/6"	23
8031 07600	76	87	111	Rd98×1/6"	26
8031 10160	101.6 (Max)	113	138	Rd125×1/4"	30

\*\*Only 1.4301 is available.

## SMS-13RB Blank nut

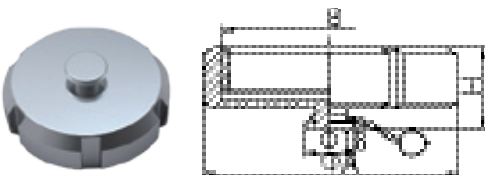


### Basic Ordering Number: 8032

NO.	Size	A	B	H
8032 02500	25	51	Rd40×1/6"	20
8032 03200	32	60	Rd48×1/6"	22
8032 03800	38	74	Rd60×1/6"	25
8032 05100	51	84	Rd70×1/6"	26
8032 06350	63.5	100	Rd85×1/6"	30
8032 07600	76	114	Rd98×1/6"	32
8032 10160	101.6 (Max)	154	Rd132×1/6"	45
8032 10160	101.6 (Min)	140	Rd125×1/4"	32

\*\*Only 1.4301 is available.

## SMS-13RBN Blank nut with boss



### Basic Ordering Number: 8033

NO.	Size	A	B	H
8033 02500	25	51	Rd40×1/6"	27
8033 03200	32	60	Rd48×1/6"	29
8033 03800	38	74	Rd60×1/6"	32
8033 05100	51	84	Rd70×1/6"	33
8033 06350	63.5	100	Rd85×1/6"	37
8033 07600	76	114	Rd98×1/6"	39
8033 10160	101.6 (Max)	154	Rd132×1/6"	52
8033 10160	101.6 (Min)	140	Rd125×1/4"	39

\*\*Only 1.4301 is available.

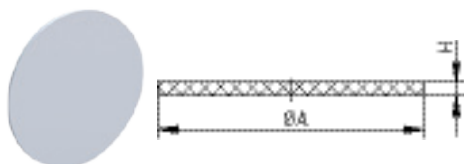
NOTE! Treatment: CNC Finished

\*\*All measurements are in millimeters (mm)  
 Conversion to inches, 25.4mm=1inch

Wall Thickness: Fittings OD25-OD51mm sizes can also manufactured with 1.6mm wall thickness.

1.3

### SP2 Plate seal



### Basic Ordering Number: 8034

NO.	Size	A	H	H(PTFE)
8034 02500	25	40	3	1.5
8034 03200	32	48	3	1.5
8034 03800	38	60	3	1.5
8034 05100	51	70	3	1.5
8034 06350	63.5	85	3	1.5
8034 07600	76	98	3	1.5
8034 10160	101.6	125	3	1.5

\*\*Silicone and EPDM are available.

NOTE!

\*\*All measurements are in millimeters (mm)  
Conversion to inches, 25.4mm=1inch

## P&E Flow Technology Profile

P&E Flow Technology is provider of professional products for the fluid industry and related solutions.

We are committed to brew processing, beverage processing, Dairy and Foodstuff processing, pharmaceutical industry, water treatment works, Bio-engineering and fluid technology industry

## P&E Flow Technology Brands

**CKAN**

**ZIMANI**

**GEMO**

**Meatier**

**Shst**

How to contact P&E Flow Technology  
[www.pestainless.com](http://www.pestainless.com)

GEMO Products Services  
Please visit and contact us:  
[www.gemoindustries.com](http://www.gemoindustries.com)

Technical Support  
[Tech@gemoindustries.com](mailto:Tech@gemoindustries.com)

Service  
[Info@gemoindustries.com](mailto:Info@gemoindustries.com)

Dealer Management  
[DealerManagement@gemoindustries.com](mailto:DealerManagement@gemoindustries.com)

## P&E Flow Technology

Address: Shacheng Street, WenZhou, P.R China.  
Post Code: 325000

Service, Sales  
Tel: +86-577-85826961  
Email: [Info@pestainless.com](mailto:Info@pestainless.com)

Dealer Management  
Email: [DealerManagement@pestainless.com](mailto:DealerManagement@pestainless.com)

Copyright © 2011 P&E

GEMO is a trademark registered and owned by P&E Flow Technology. P&E reserves the right to change specifications without prior notify action.